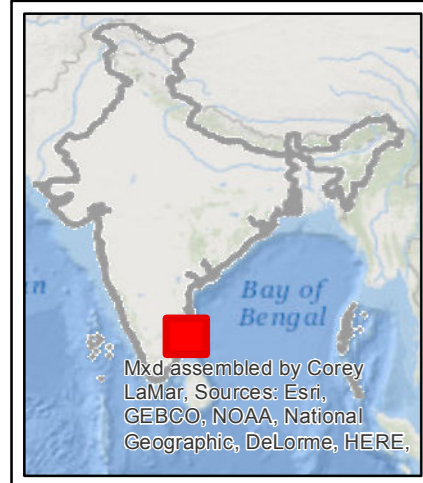


Mapping Floods in Tamil Nadu using Sentinel-1 Satellite Images



At least 122 people have lost their lives as heavy rains resulted in floods in Tamil Nadu. Chennai has been badly affected by floods as around 59 people have been killed in the capital so far. As per media reports, the incessant rains are caused due to a depression in the Bay of Bengal coast near Tamil Nadu. Reportedly, the low pressure system is moving towards the southern coast of Andhra Pradesh resulting in rains in the state.

To determine the extent of severity in the flood affected districts in Tamil Nadu, Sentinel-1 satellite images referring to 12th November 2015 were obtained from European Space Agency to map the inundated areas. Dark areas in black referring to standing water. In total an estimated 567 sq.km were inundated of which the severely affected districts includes Cuddalore (360 sq.km), Nagapattinam (113 sq.km), Ariyalur (70 sq.km) and Perambalur (24 sq.km). Agriculture damage assessment at district level are Cuddalore (307 sq.km), Nagapattinam (82 sq.km), Ariyalur (50 sq.km) and Perambalur (16 sq.km).

Mxd assembled by Corey LaMar, Sources: Esri, GEBCO, NOAA, National Geographic, DeLorme, HERE.

Legend

Flood Dates : 12 Novembe 2015
Disaster Image : SENTINEL-1

Flood

- 12 Nov. 2015 flood
- River/Permanent water
- Ocean
- India boundary
- District boundary

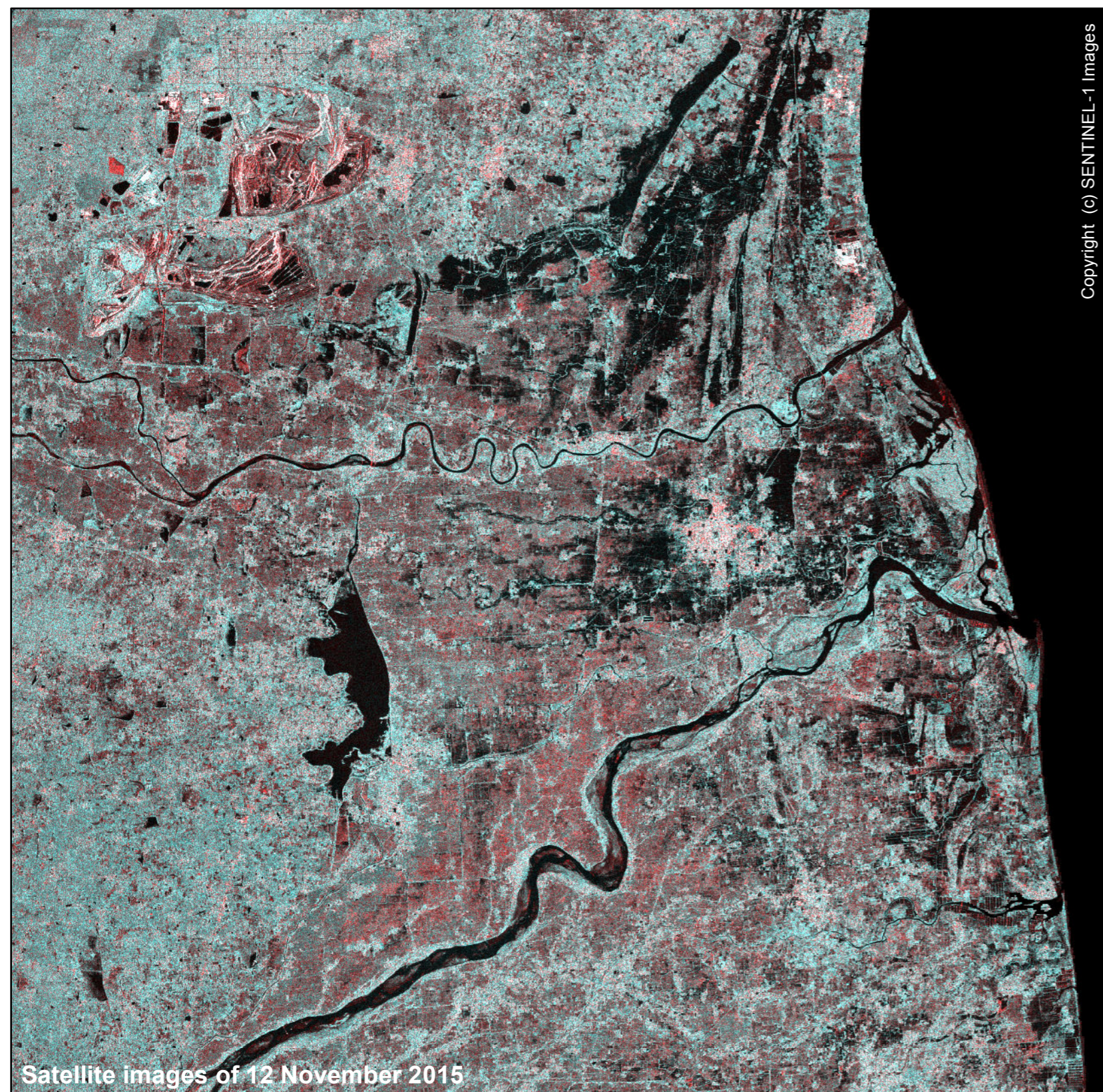
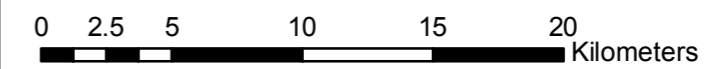
Map Prepared by:



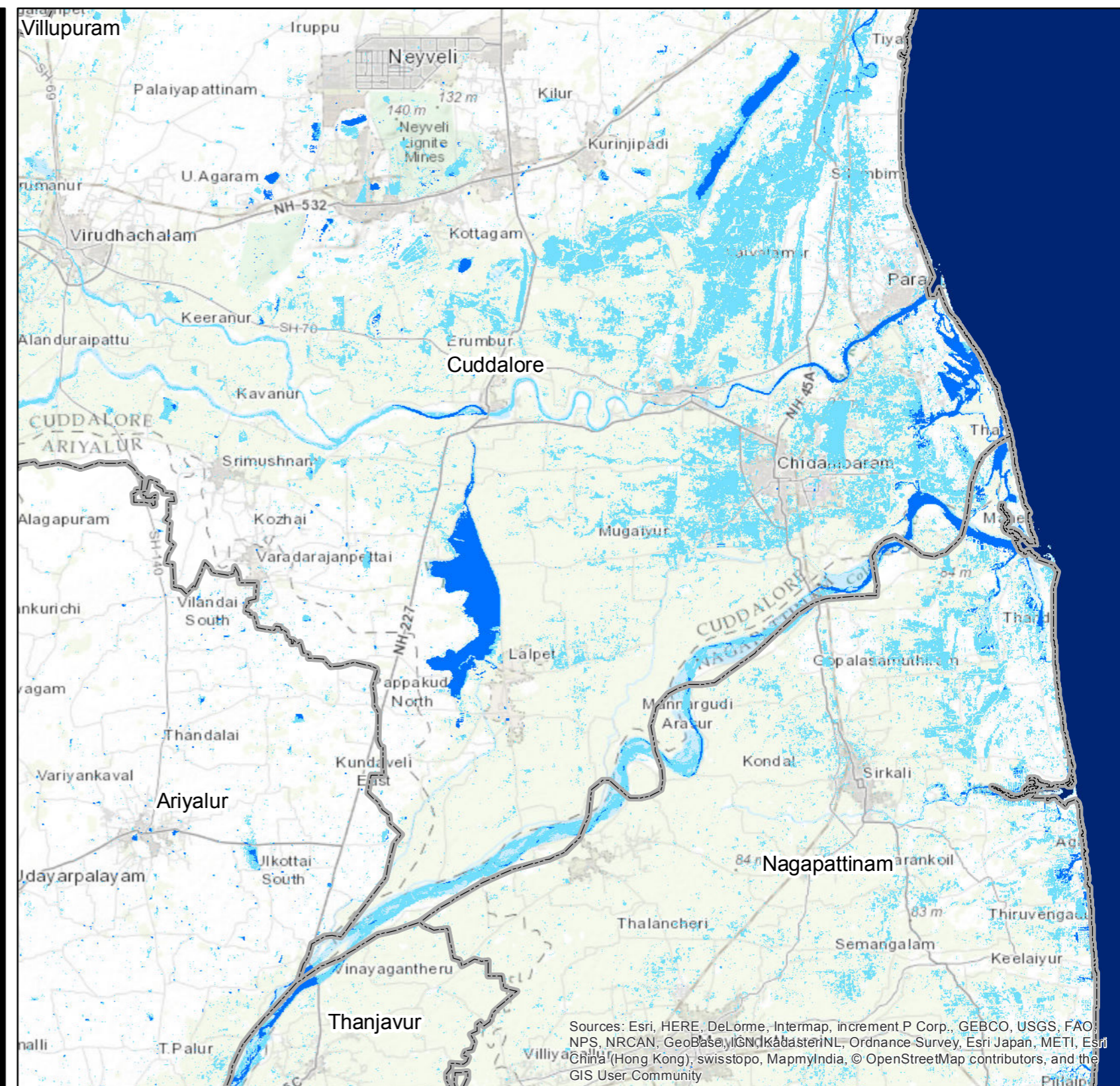
Data Provided by:



The depiction and use of boundaries, geographic names and related data shown in these maps are based on the sources they have been drawn from and quoted. These are neither error-free nor do they imply official endorsement or the position of IWMI.



Copyright (c) SENTINEL-1 Images



Satellite images of 12 November 2015

Sources: Esri, HERE, DeLorme, Intermap, increment P Corp., GEBCO, USGS, FAO, NPS, NRCAN, GeoBase, IGN, Kadaster NL, Ordnance Survey, Esri Japan, METI, Esri China (Hong Kong), swisstopo, MapmyIndia, © OpenStreetMap contributors, and the GIS User Community