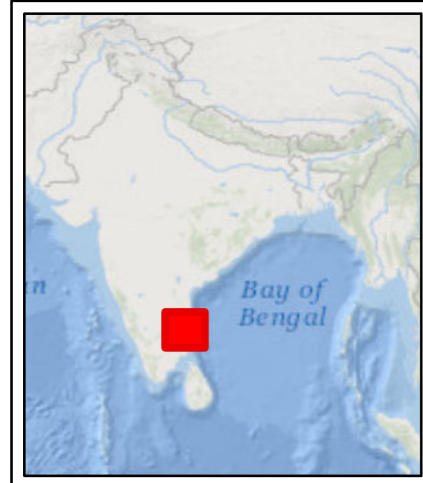


Mapping Floods in Cuddalore (Tamil Nadu) using Sentinel-1 Satellite Images of 2015 November 12 and 24



At least 165 people have lost their lives as heavy rains resulted in floods in Tamil Nadu. Chennai has been badly affected by floods as around 59 people have been killed in the capital so far. As per media reports, the incessant rains are caused due to a depression in the Bay of Bengal coast near Tamil Nadu. The heaviest rainfall in over a century caused massive flooding across Tamil Nadu, driving thousands from their homes, shutting auto factories and paralysing the airport in capital Chennai.

To determine the extent of severity in the flood affected districts in Tamil Nadu, Sentinel-1 satellite images referring to 24th November 2015 were obtained from European Space Agency to map the inundated areas. Dark areas in black referring to standing water. In total an estimated 567 sq.km were inundated of which the severely affected districts includes Cuddalore (360 sq.km), Nagapattinam (113 sq.km), Ariyalur (70 sq.km) and Perambalur (24 sq.km). Agriculture damage assessment at district level are Cuddalore (307 sq.km), Nagapattinam (82 sq.km), Ariyalur (50 sq.km) and Perambalur (16 sq.km).

Legend

- Flood Date : 24 Novembe 2015
- Satellite Image : SENTINEL-1
- 24 Nov. 2015 (Post Disaster)
- River/Permanent water
- Urban / Land Use
- District boundary
- Railways

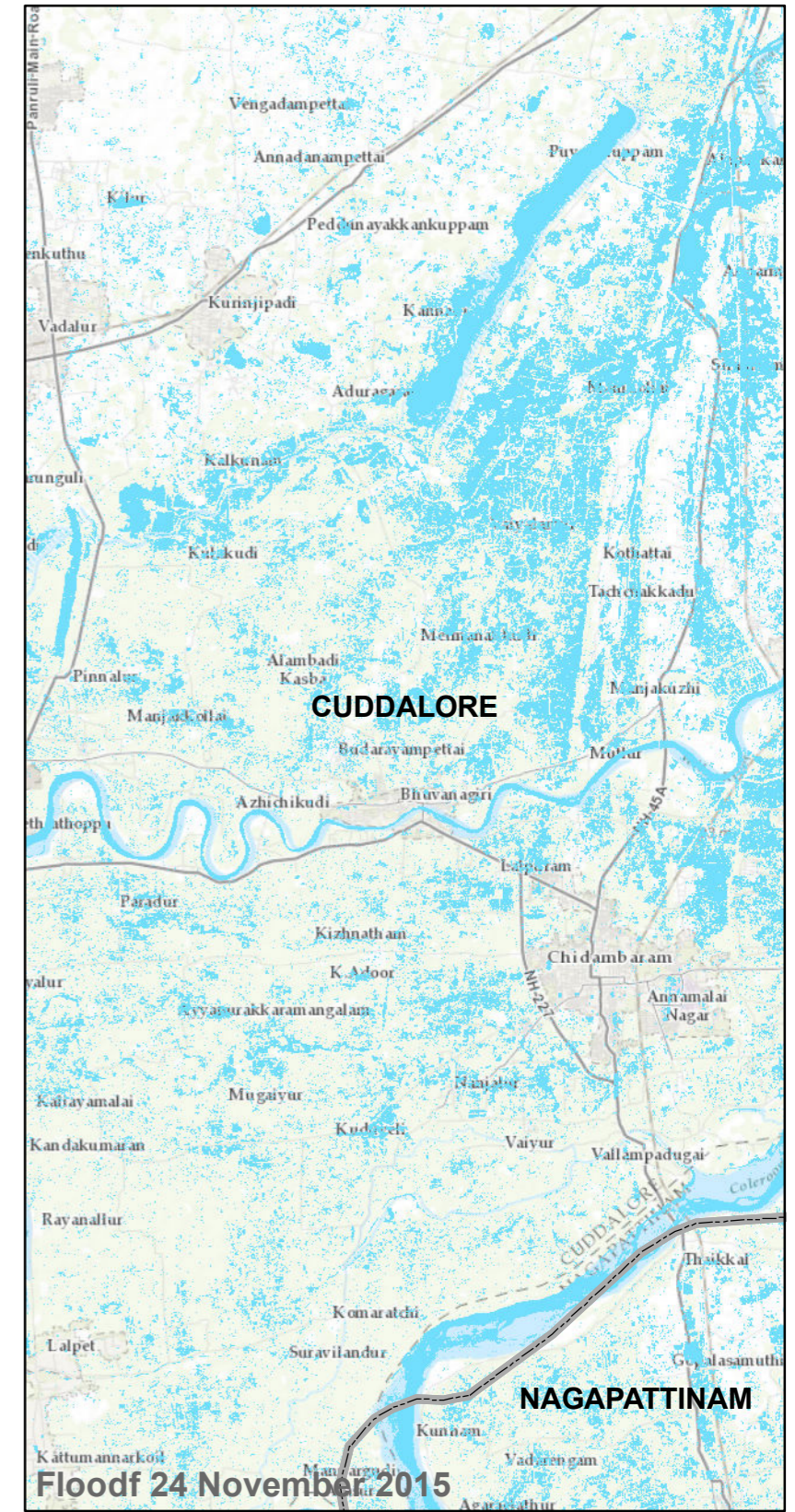
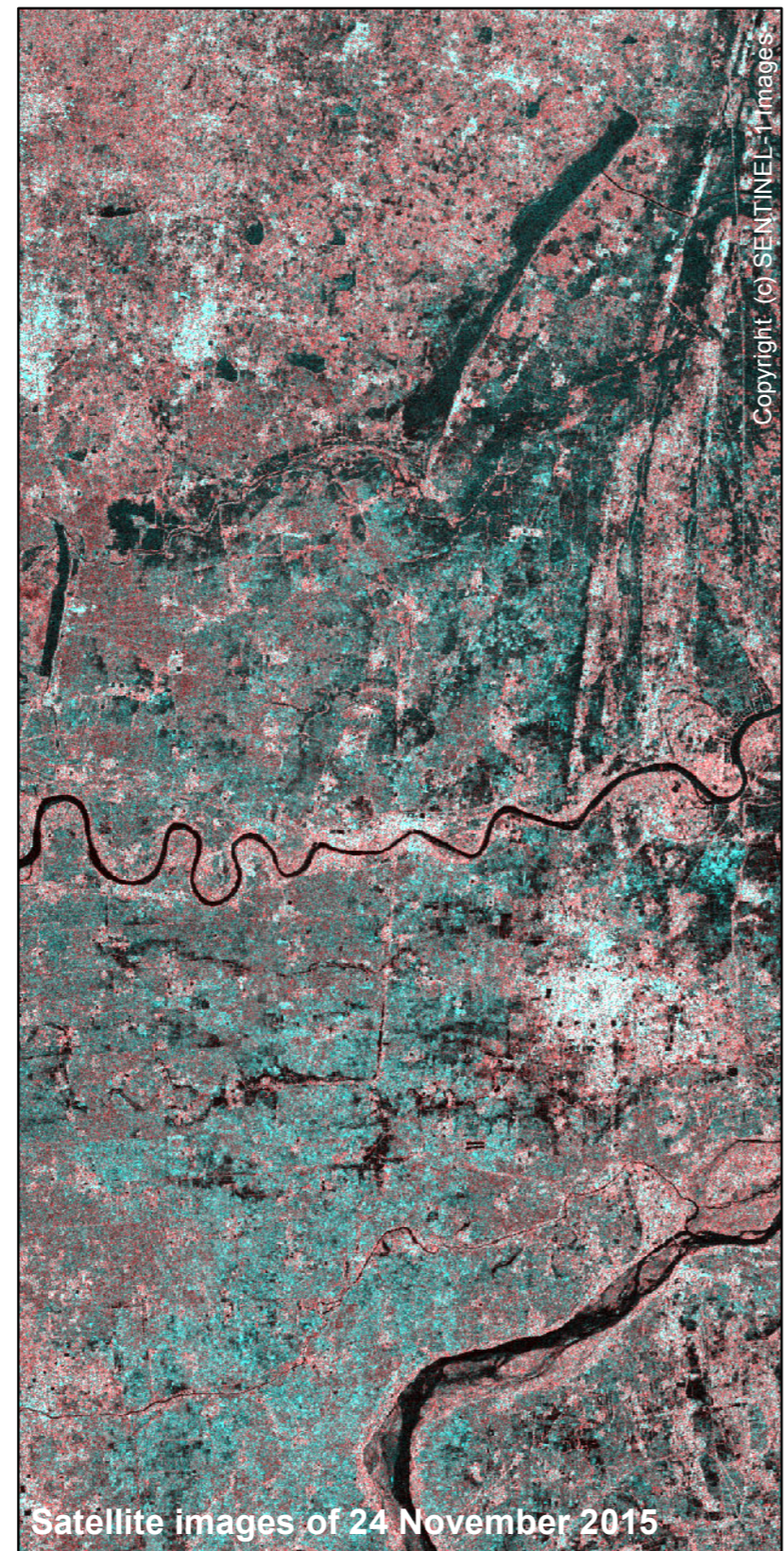
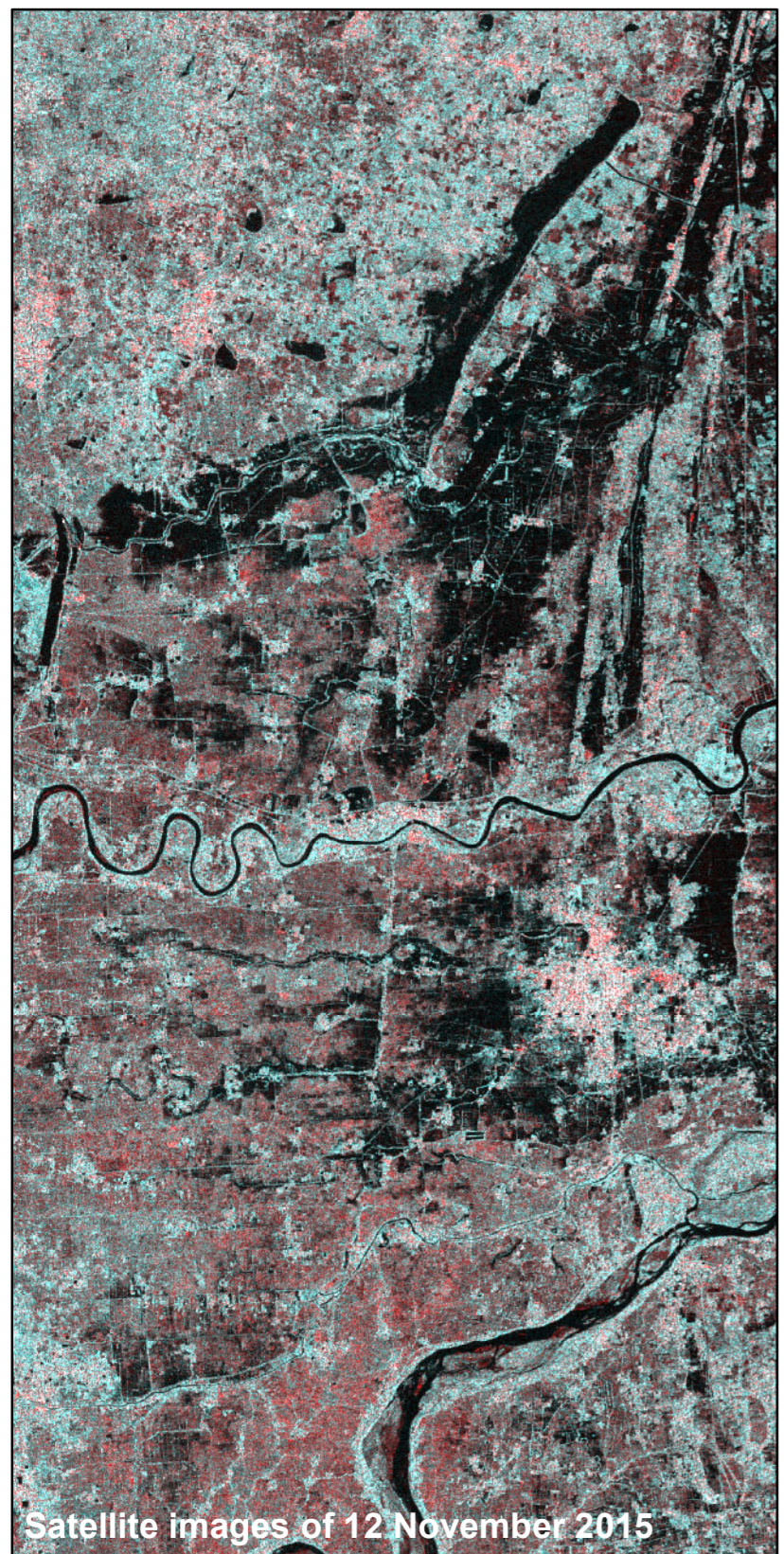
Map Prepared by:



Data Provided by:



The depiction and use of boundaries, geographic names and related data shown in these maps are based on the sources they have been drawn from and quoted. These are neither error-free nor do they imply official endorsement or the position of IWMI.



Satellite images of 12 November 2015

Satellite images of 24 November 2015

Flood 12 November 2015

Flood 24 November 2015