

# THE DECISION TREE FRAMEWORK:

## BEYOND DOWNSCALING TO CLIMATE INFORMED DECISIONS

---

Casey Brown

Civil and Environmental Engineering  
University of Massachusetts, Amherst

*2014-2016: LTHE, University of Grenoble and  
Environmental Change Institute, University of Oxford*

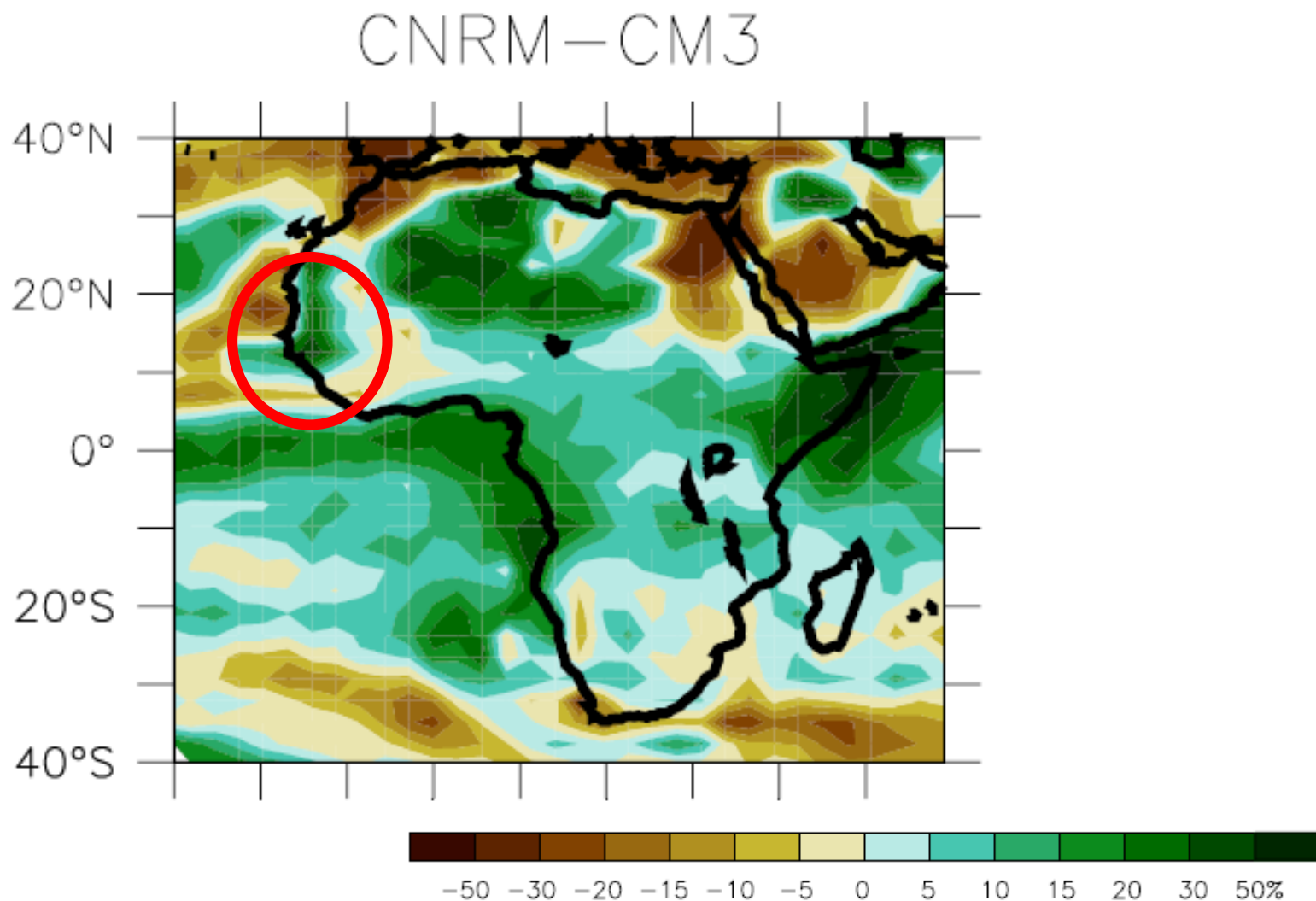


# What is a Water Planner to do?

- Investments in the water sector are potentially significantly impacted by climate change
- Assessment of climate change risks is required
- Climate change may cause the project goals to not be met
- Unclear how to use climate information to aid decisions

*A standard process for Project Evaluation for Climate Risk is needed!*

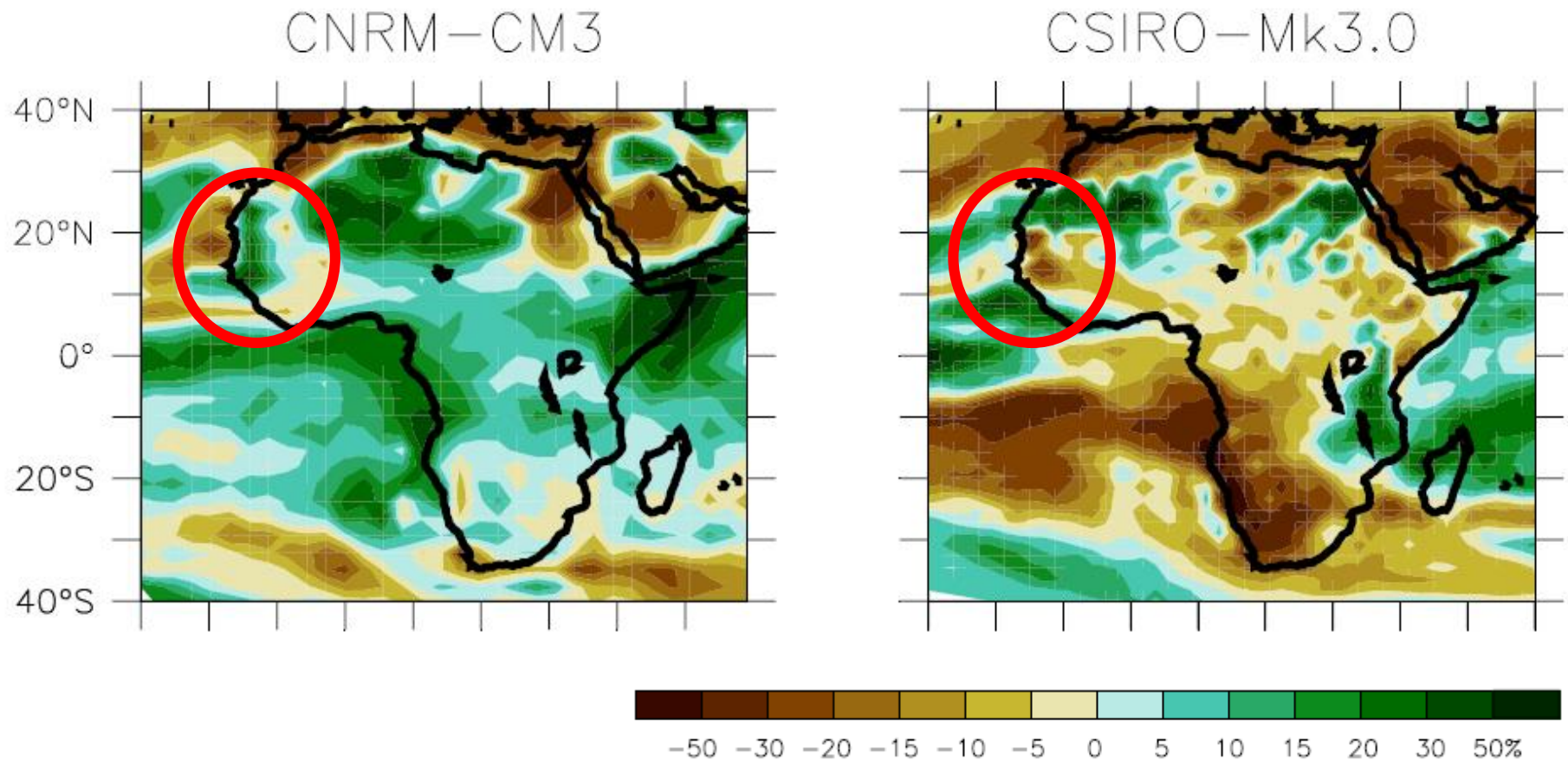
# Climate models project future climate



from S. Hallegatte

The Meteo-France model, from IPCC

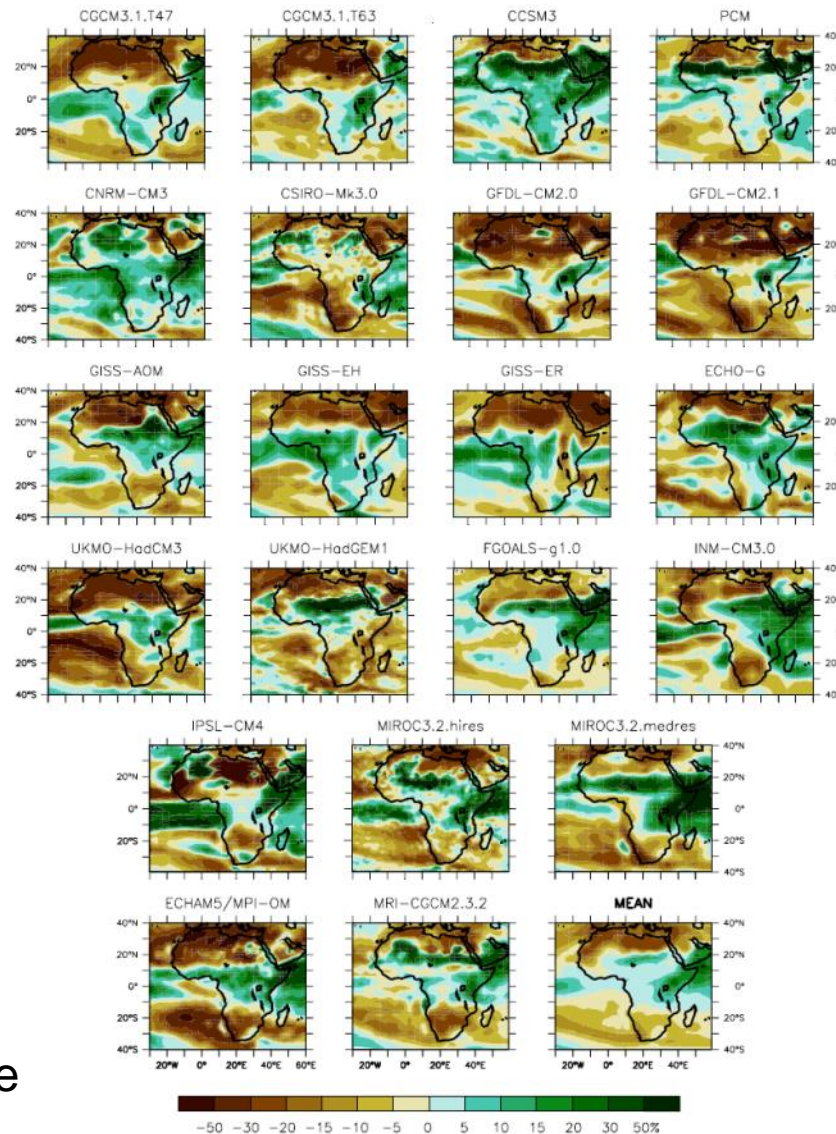
# But they disagree with each other



from S. Hallegatte

The Meteo-France and the Australian model, from IF

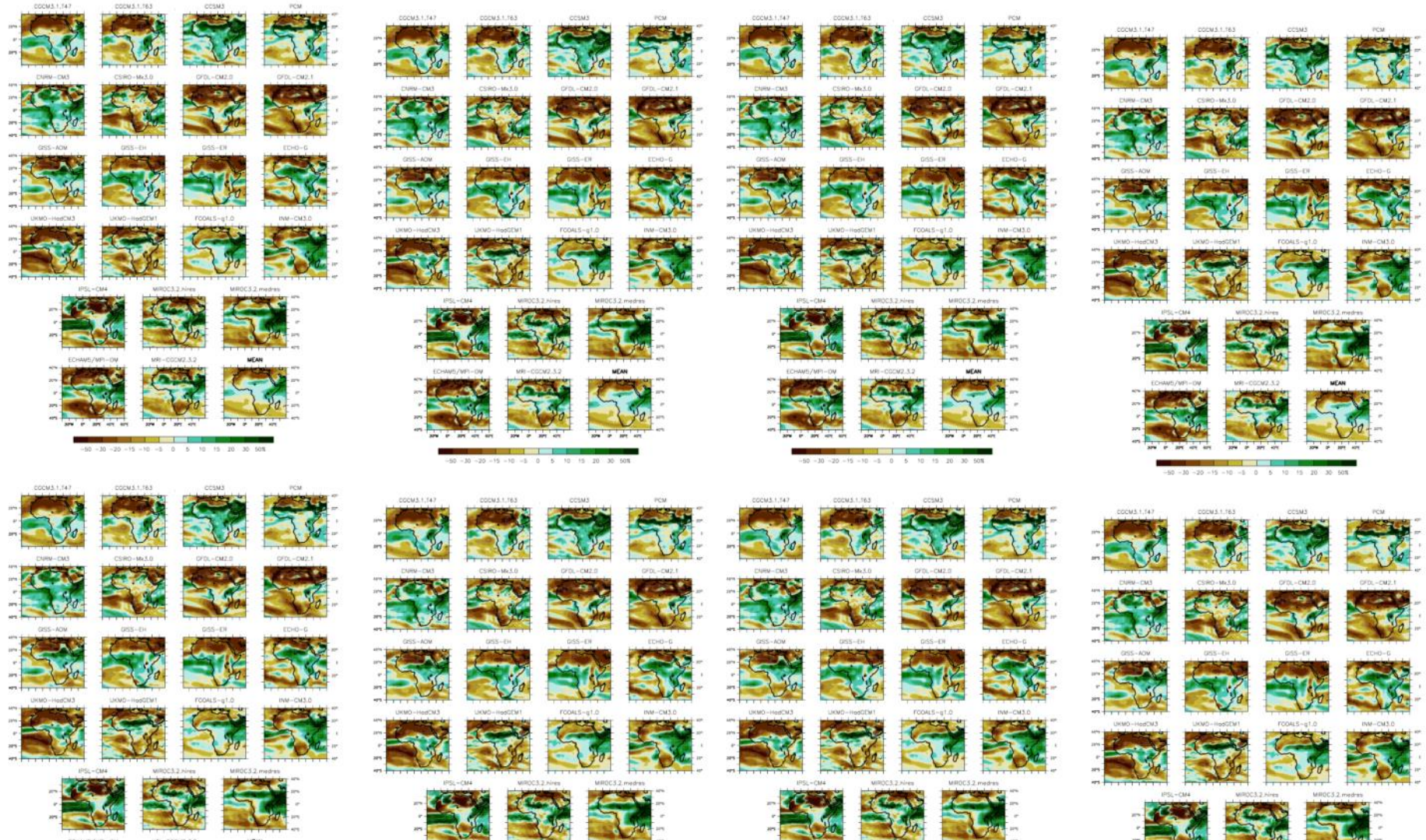
# ... and we have a lot of models...



from S. Hallegatte



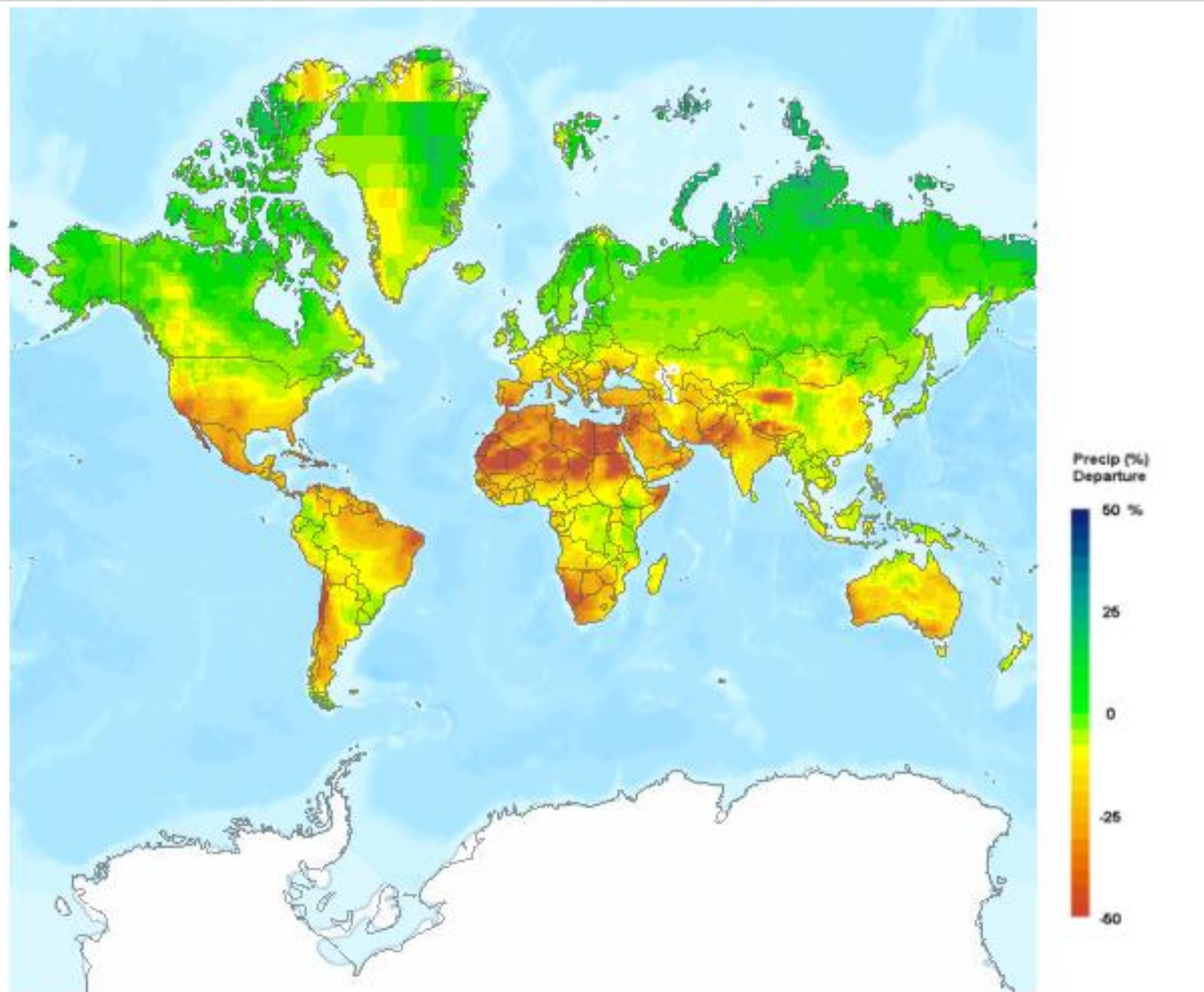
# ... and future climates depend on future climate policies and socio-economic trends...





# Change in Annual Precipitation by the 2050s

Model: Ensemble Lowest, SRES emission scenario: A2

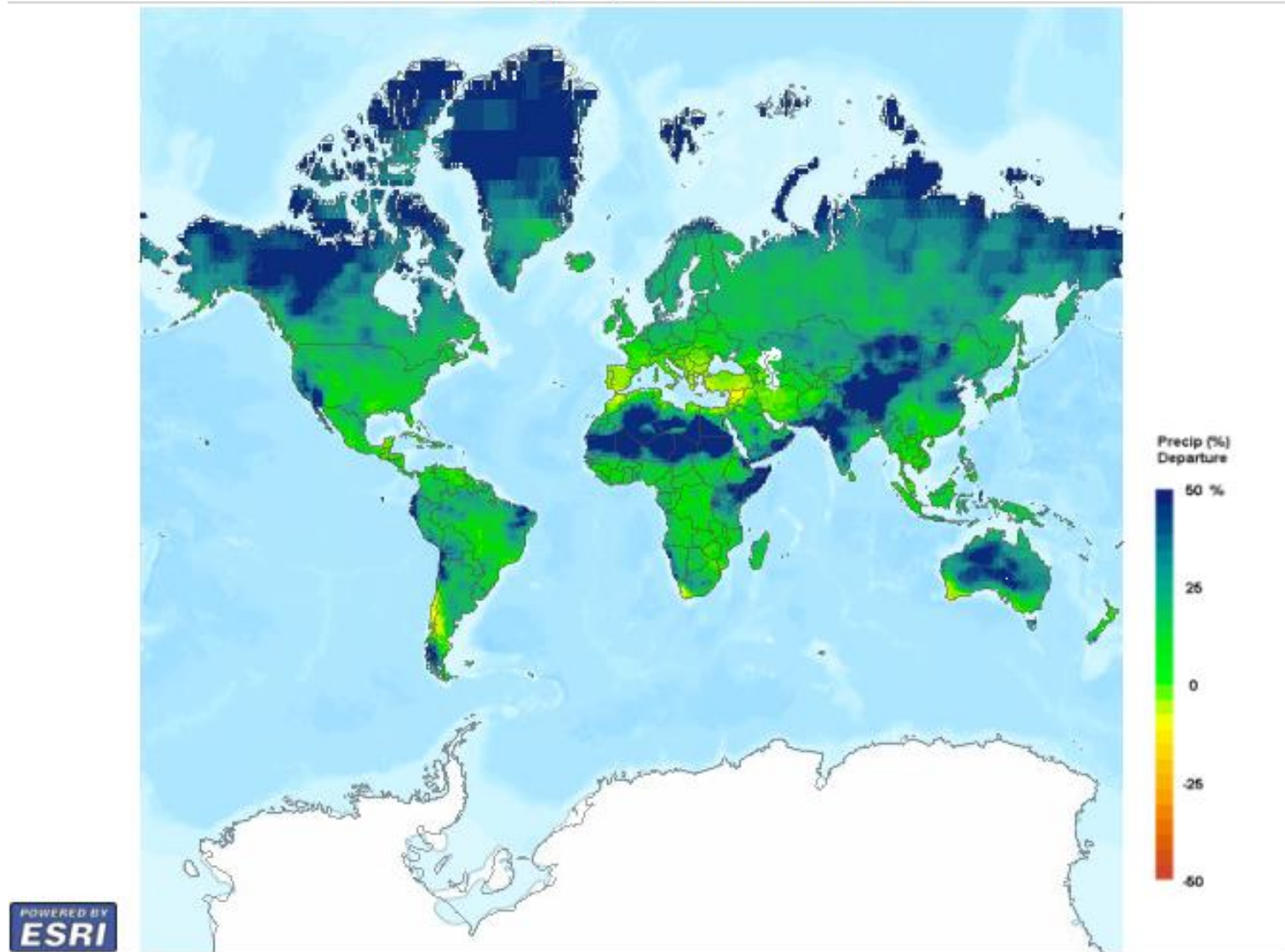


Map data Sources: Esri, HERE, DeLorme, Intermap, increment P Corp., GEBCO, USGS, FAO, NPS, NRCAN, GeoBase, IGN, Kadaster NL, Ordnance Survey, Esri Japan, METI, Esri China (Hong Kong), swisstopo, MapmyIndia, © OpenStreetMap contributors, and the GIS User Community

Data Source: Global climate model output, from the World Climate Research Programme's (WCRP's) Coupled Model Intercomparison Project phase 3 (CMIP3) multi-model dataset (Meehl et al., 2007), were downscaled as described by Maurer et al. (2009) using the bias-correction/spatial downscaling method (Wood et al., 2004) to a 0.5 degree grid, based on the 1950-1999 gridded observations of Adam and Lettenmaier (2003).

# Change in Annual Precipitation by the 2050s

Model: Ensemble Highest, SRES emission scenario: A2

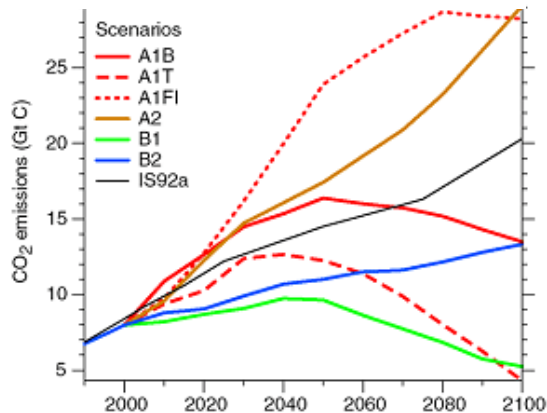


Map data Sources: Esri, HERE, DeLorme, Intermap, increment P Corp., GEBCO, USGS, FAO, NPS, NRCAN, GeoBase, IGN, Kadaster NL, Ordnance Survey, Esri Japan, METI, Esri China (Hong Kong), swisstopo, MapmyIndia, © OpenStreetMap contributors, and the GIS User Community

Data Source: Global climate model output, from the World Climate Research Programme's (WCRP's) Coupled Model Intercomparison Project phase 3 (CMIP3) multi-model dataset (Meehl et al., 2007), were downscaled as described by Maurer et al. (2009) using the bias-correction/spatial downscaling method (Wood et al., 2004) to a 0.5 degree grid, based on the 1950-1999 gridded observations of Adam and Lettenmaier (2003).



# Emission Scenarios

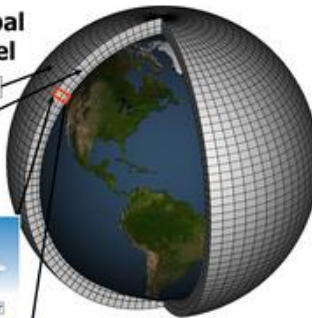


# General Circulation Models (GCMs)

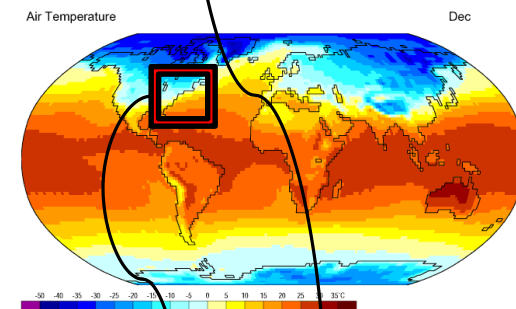
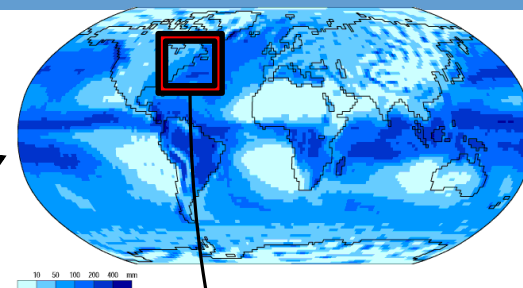
## Schematic for Global Atmospheric Model

Horizontal Grid (Latitude-Longitude)

Vertical Grid (Height or Pressure)

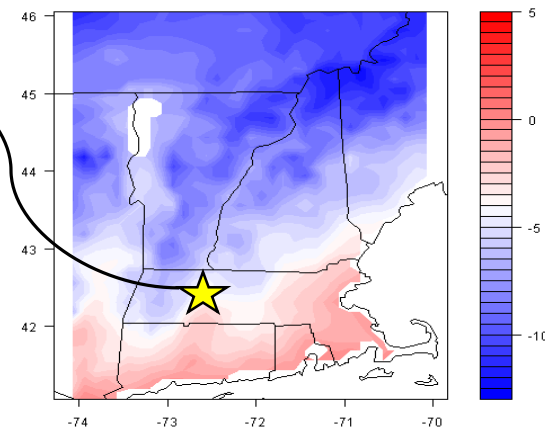


# Geography Department, U. Oregon

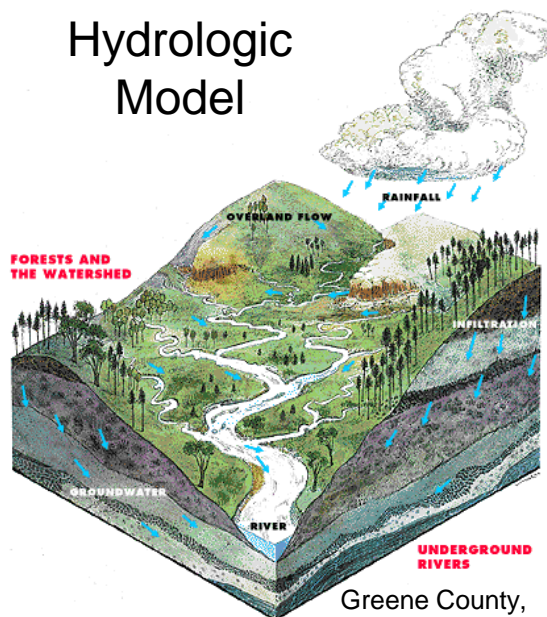


## Downscaling

GCM Historic Winter Mean Air Temp (deg C)



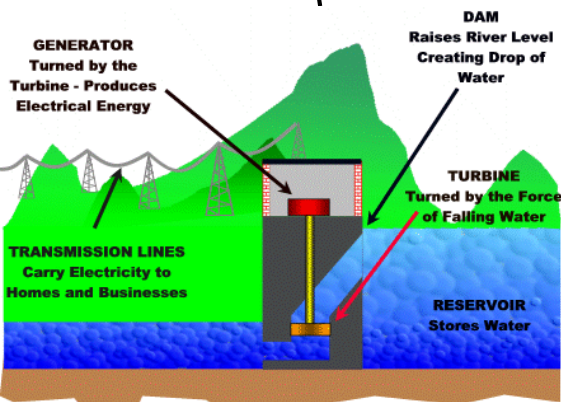
## Hydrologic Model



Greene County,  
PA Department of  
Econ.  
Development

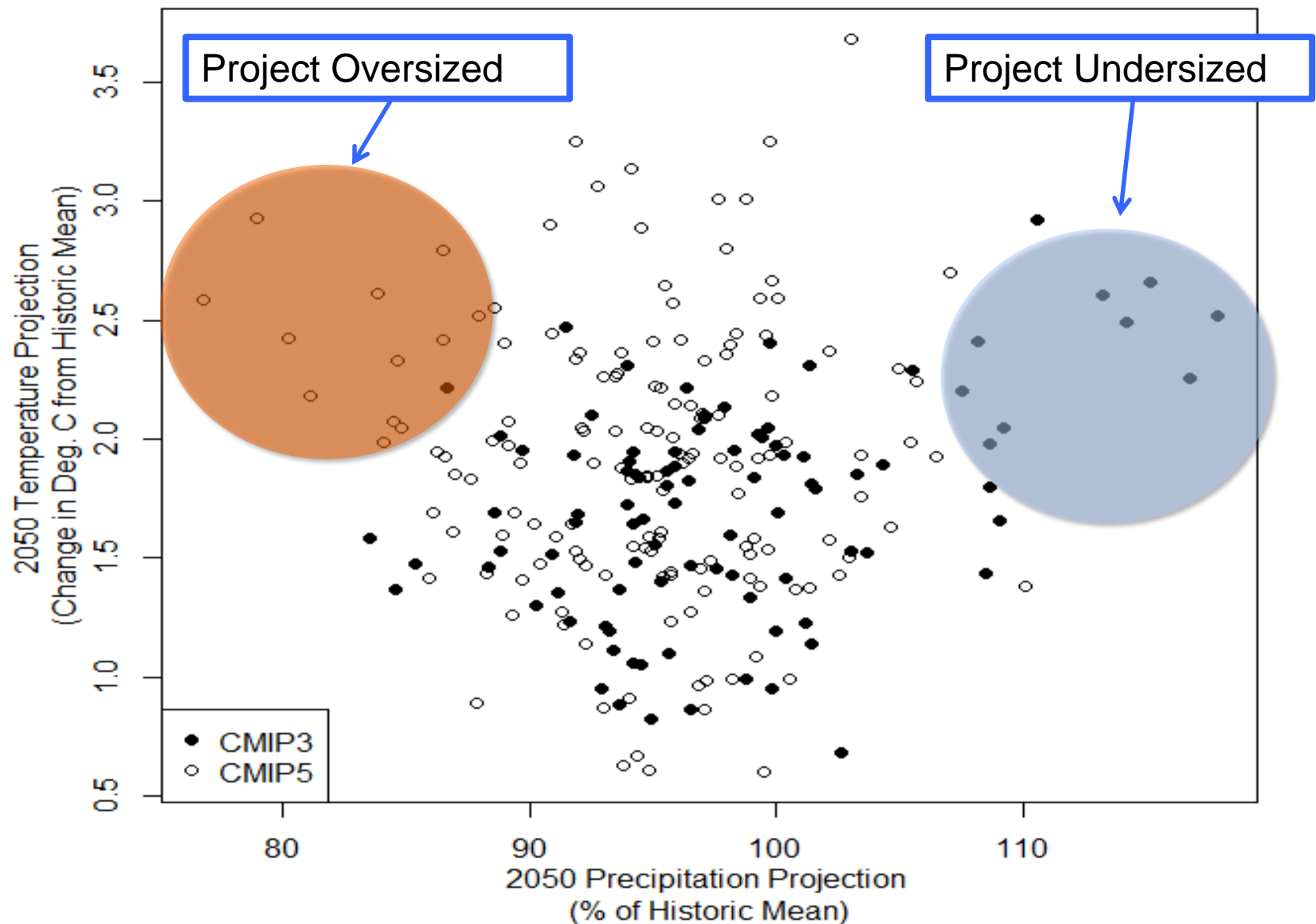
## Water Resources System Model

## Water System Performance Under Future Climate Scenarios



Wisconsin Valley Improvement Company

# Now What?

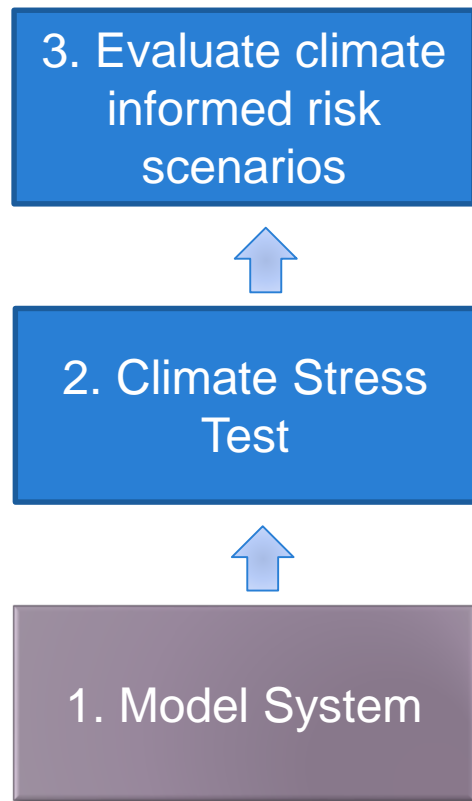


# An Alternative Approach

- Assess impacts and identify hazards via systematic sensitivity analysis
  - Identify and explore the uncertain variables that are relevant (HINT: Not emissions scenarios or downscaling methods!)
- “Climate Stress Test”
- Use the best available climate information to inform the level of concern with the risk
  - Subjective Probabilities or prioritization of concerns

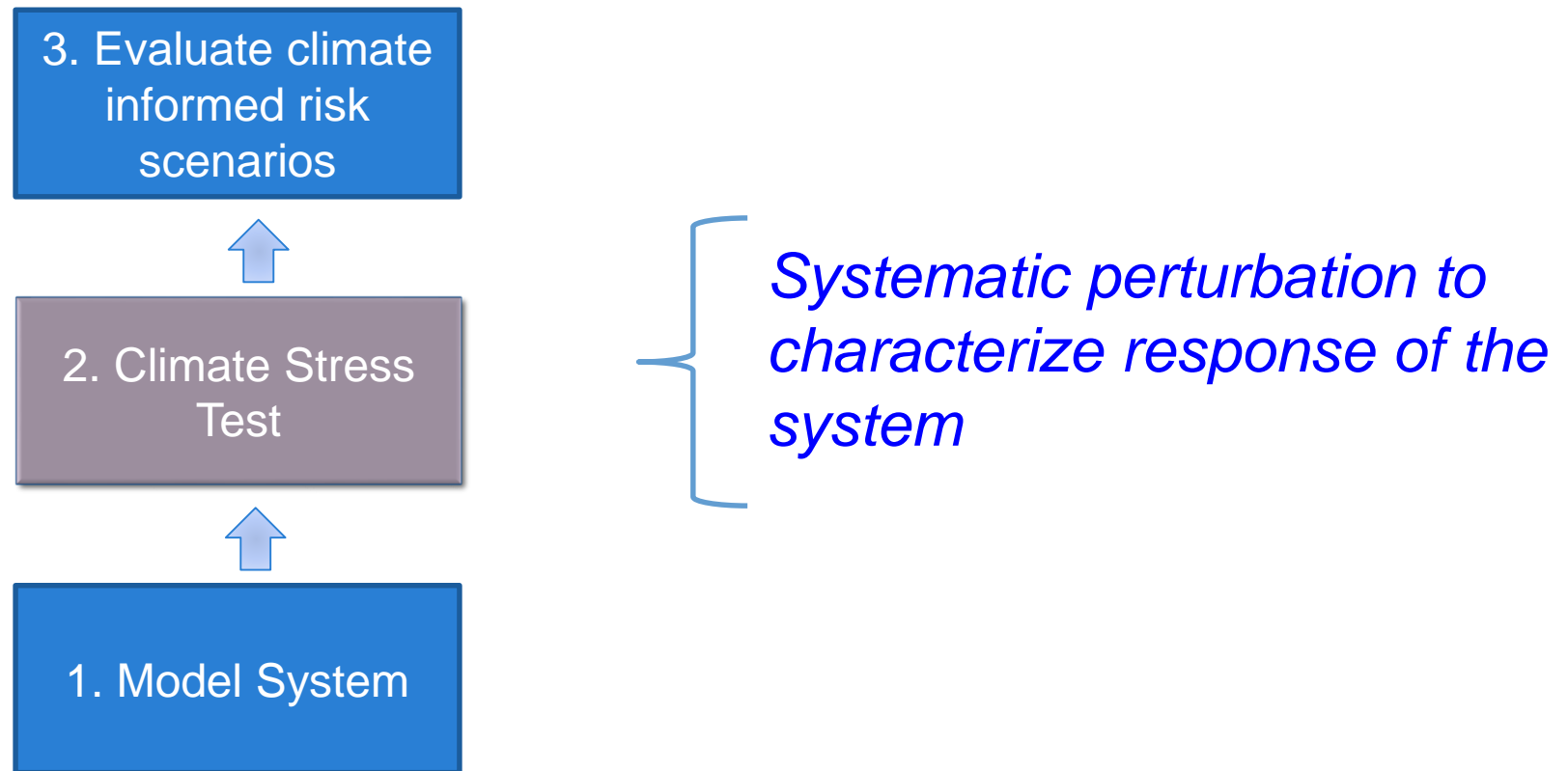


# Decision-Scaling for Adaptation to Climate Change

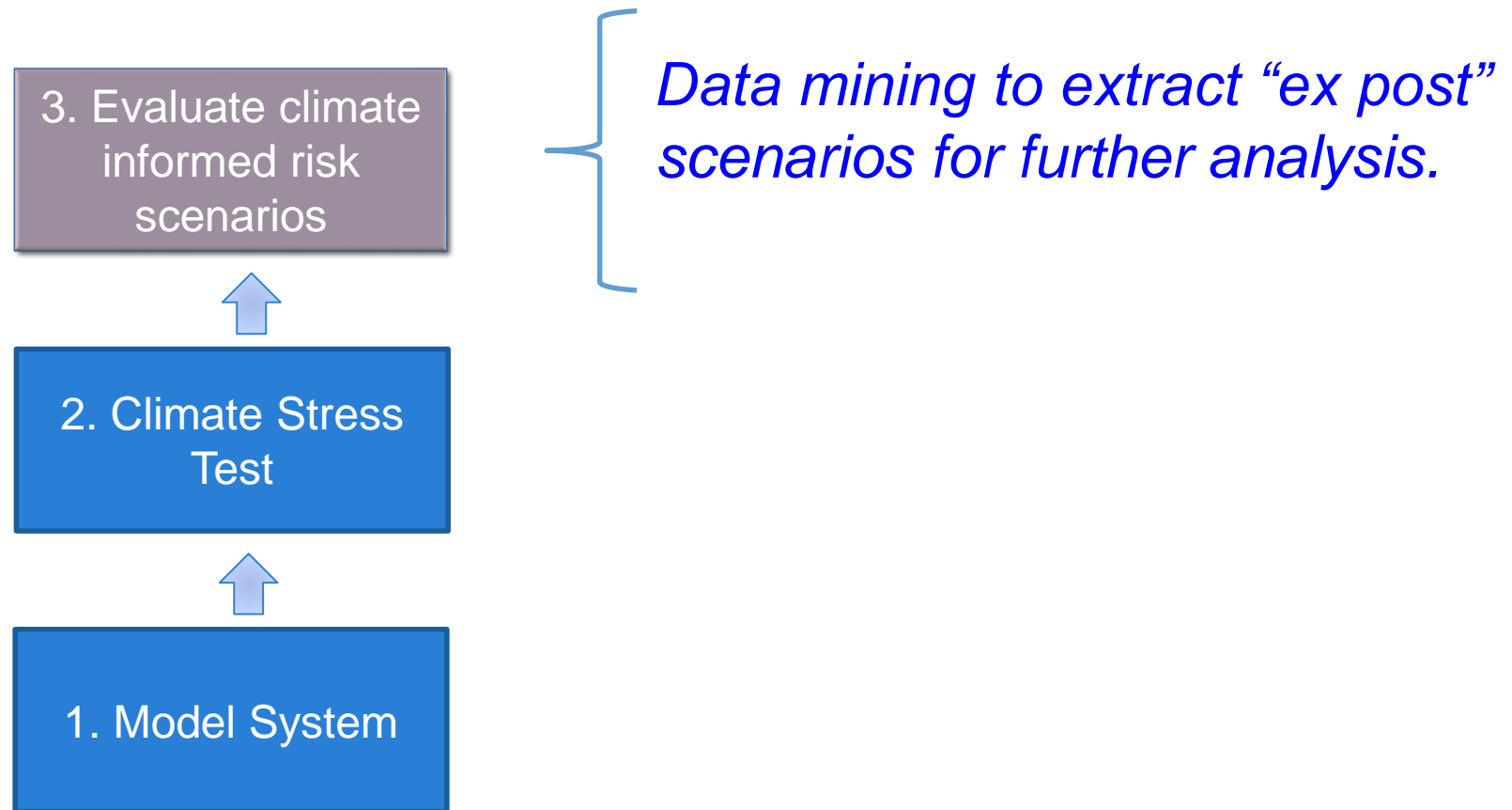


*Define link between climate and decisions*

# Decision-Scaling for Adaptation to Climate Change



# Decision-Scaling for Adaptation to Climate Change







# Confronting Climate Uncertainty in Water Resources Planning and Project Design

*The Decision Tree Framework*

Patrick A. Ray  
Casey M. Brown

# IDENTIFYING AND MANAGING CLIMATE RISKS

## THE CLIMATE CHANGE DECISION TREE

- ★ A scientifically defensible, flexible, cost-efficient tool on climate risks
- ★ A bottom-up approach taking into account local realities and climate sensitivity

### PHASE 4 CLIMATE RISK MANAGEMENT

**CLIMATE RISK  
MANAGEMENT PLAN  
& CLIMATE RISK REPORT**  
Measures needed to ensure the project's robustness are documented

Can the project cope with potential climate changes in the system ('robustness')?

NO

If project robustness is not achievable, the project is adjusted and put through phase 3 again, or a redesigned project starts at phase 1.

What is the plausible climate risk?

LOW

Climate Risk Report

Is climate a dominant factor?

NO

Climate Risk Statement

Is the proposed project climate sensitive?

NO

Climate Screening Worksheet

### PHASE 3 CLIMATE STRESS TEST

**Exhaustive climate risks analysis:**  
Combining historic data, global climate model projections, a hydrologic-economic water system model, etc.

### PHASE 2 DESKTOP ANALYSIS

**A rapid project scoping exercise,** using a (simplified) water resources system model, compares climate impacts with others such as existing variability, population growth, etc.

### PHASE 1 PROJECT SCREENING

**Climate sensitivity screening for all Bank projects:**  
Is climate a factor to take into account?

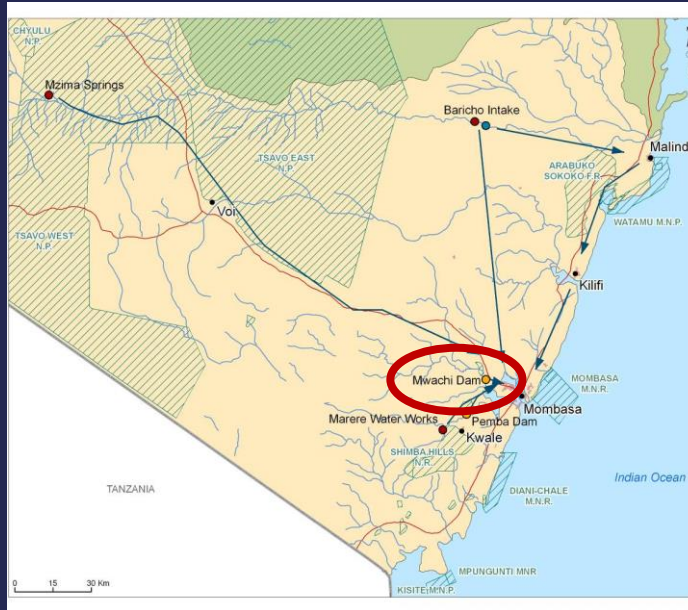


[worldbank.org/water](http://worldbank.org/water)



WATER  
PARTNERSHIP  
PROGRAM

[water.worldbank.org/wpp](http://water.worldbank.org/wpp)



Mombasa city

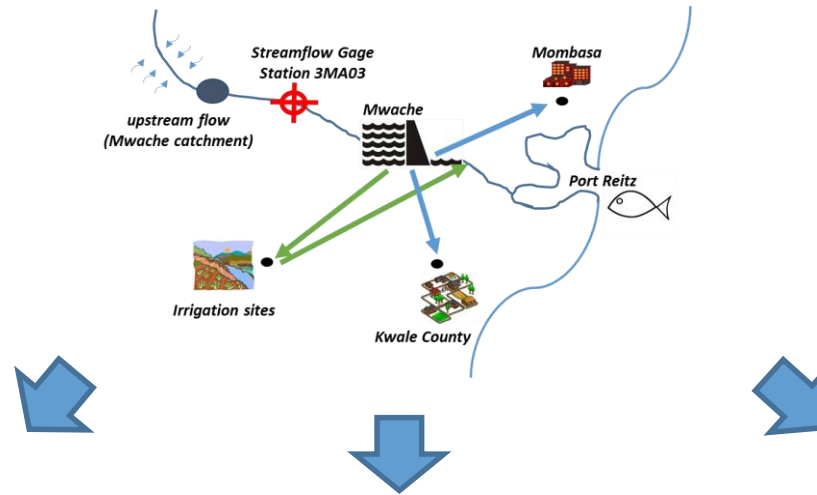


# NEW WATER SUPPLY

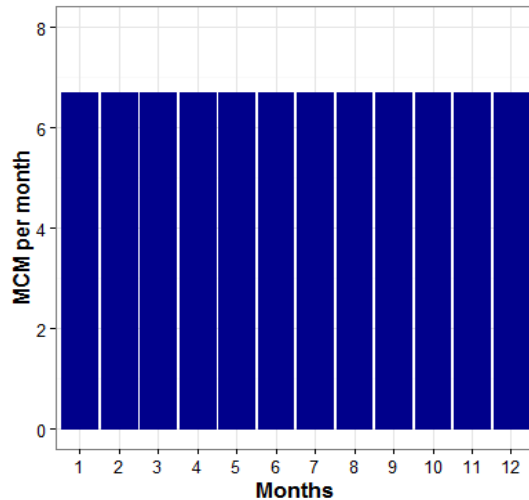
Mwache Reservoir, Kenya



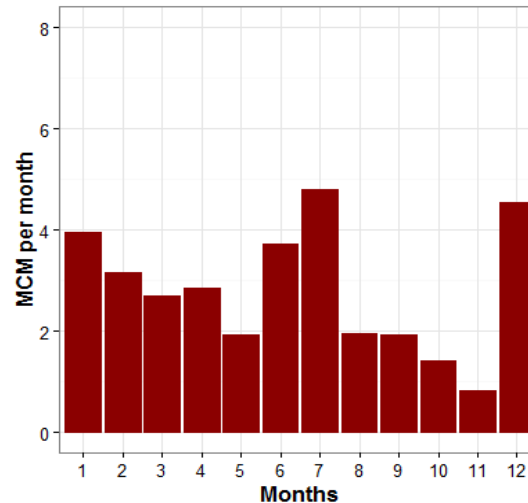
# New Water Supply for Mombassa, Kenya - Mwache Dam



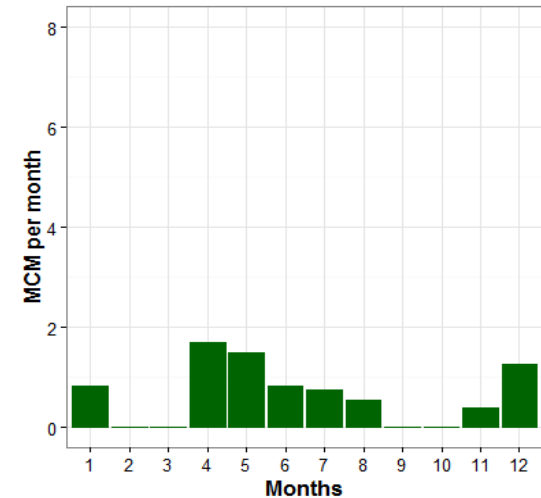
**Planned releases for domestic use<sup>1,2</sup>  
(Mombasa + Kwale)**



**Planned releases for irrigation<sup>1,2</sup>  
(for a target of 2800 ha)**

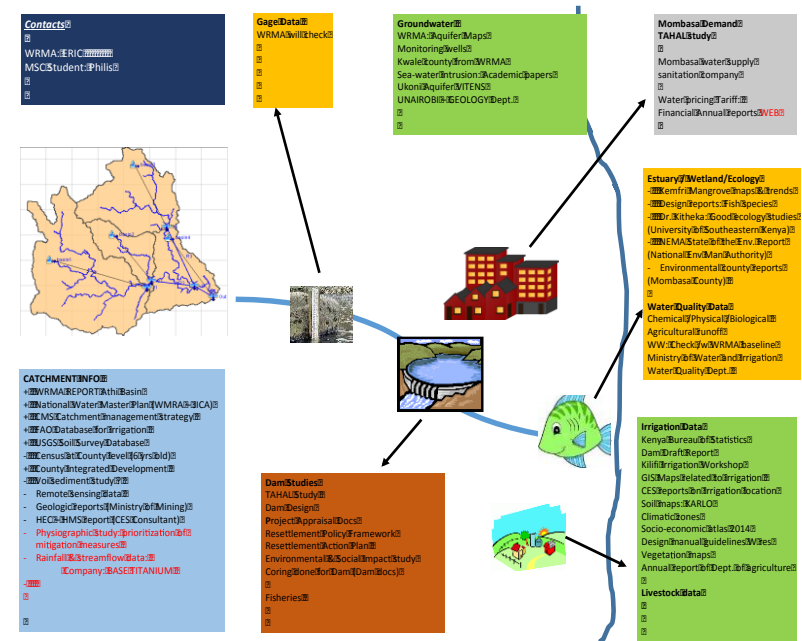


**Planned releases for environmental protection<sup>1,2</sup>**



# Project inception workshop

(Kwale, Kenya Aug 10-15, 2015)

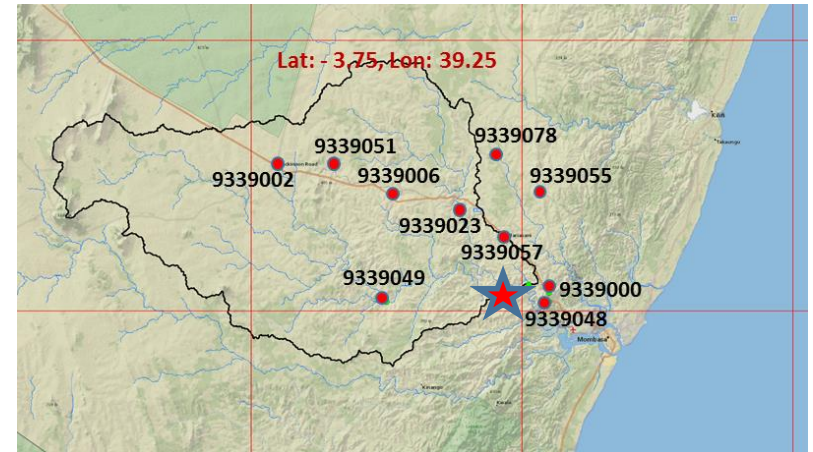
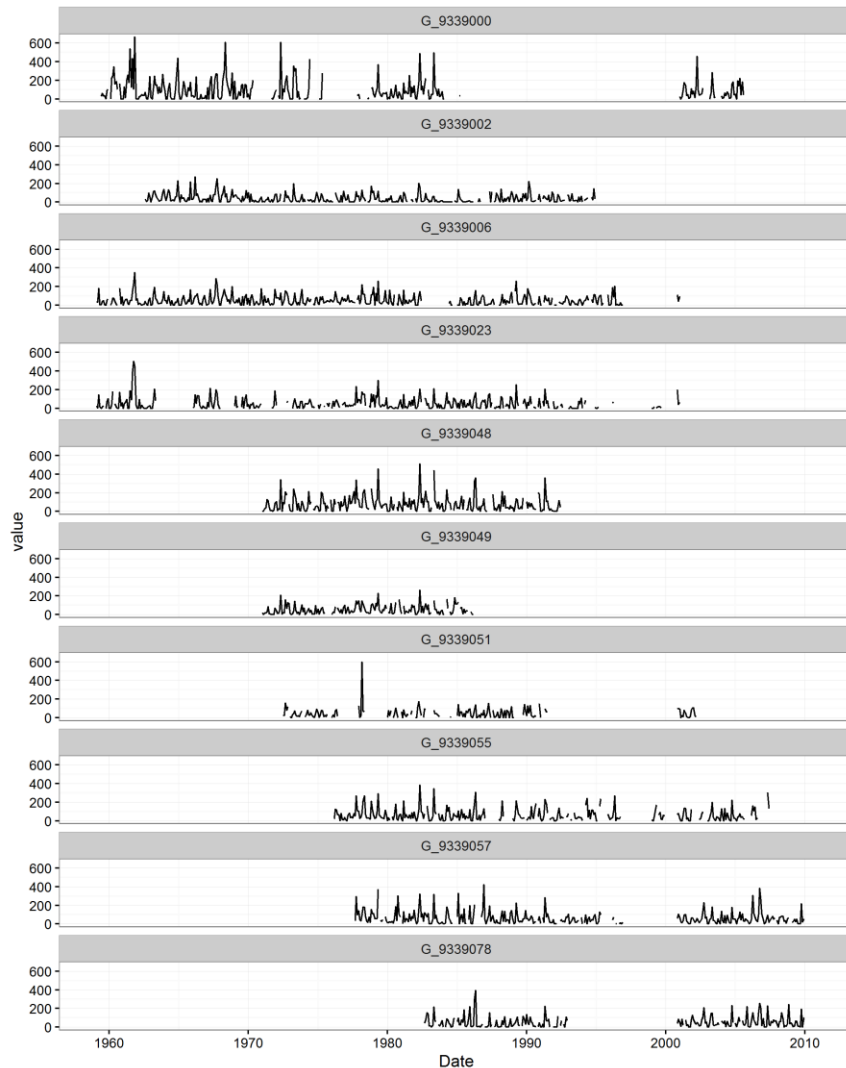


# Framing the Analysis – More than Climate

Uncertainties	Investment and Policy Options
<p><u>Natural Uncertainties</u></p> <p>Precipitation (intensity, duration, frequency, timing)</p> <p>Temperature (melt/evapotranspiration)</p> <p>Sedimentation</p> <p>Seismic risk and disasters</p> <p><u>Nepal Future System and Operations</u></p> <p>National markets; International agreements; Prices</p> <p><u>Project Variables</u></p> <p>Capital costs; Lifetime of the projects; Discount rate</p>	<p><u>Upper Arun HP</u></p> <p>335 MW (Q70) – original design</p> <p>750 MW (Q40) – possible alternative</p> <p>2000 MW (Q25) – possible alternative</p>
Metrics of Success	Models and Data
<p><u>Hydropower Performance</u></p> <p>Net Present Value</p> <p>Power generation (Dry season; Wet season; Total Annual)</p>	<p><u>Hydrological model</u></p> <p>UMass Glacio-Hydrologic Model</p> <p><u>Watershed System</u></p> <p>Run of River Hydropower in R</p>



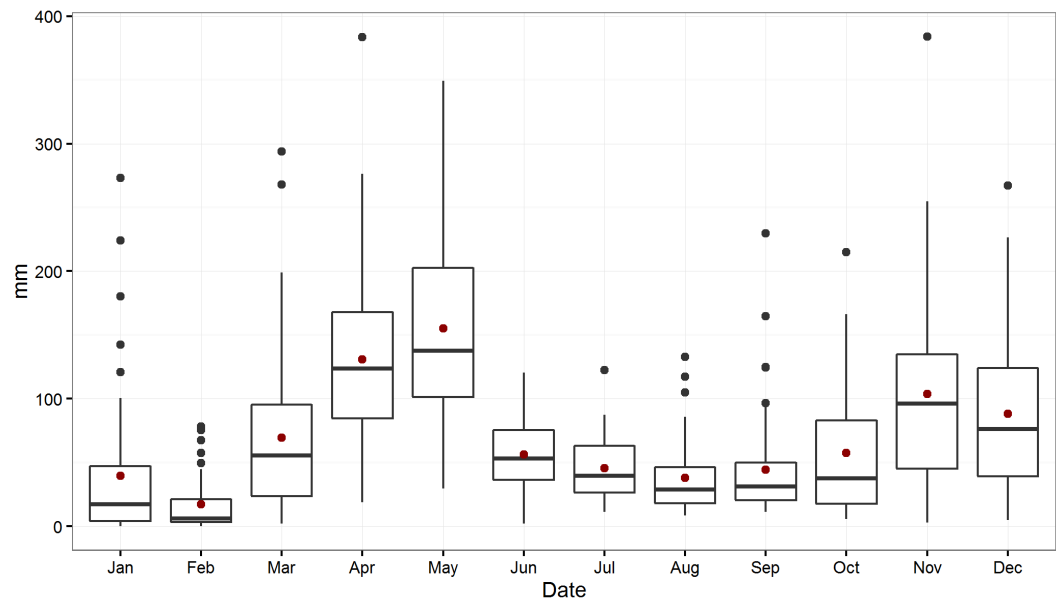
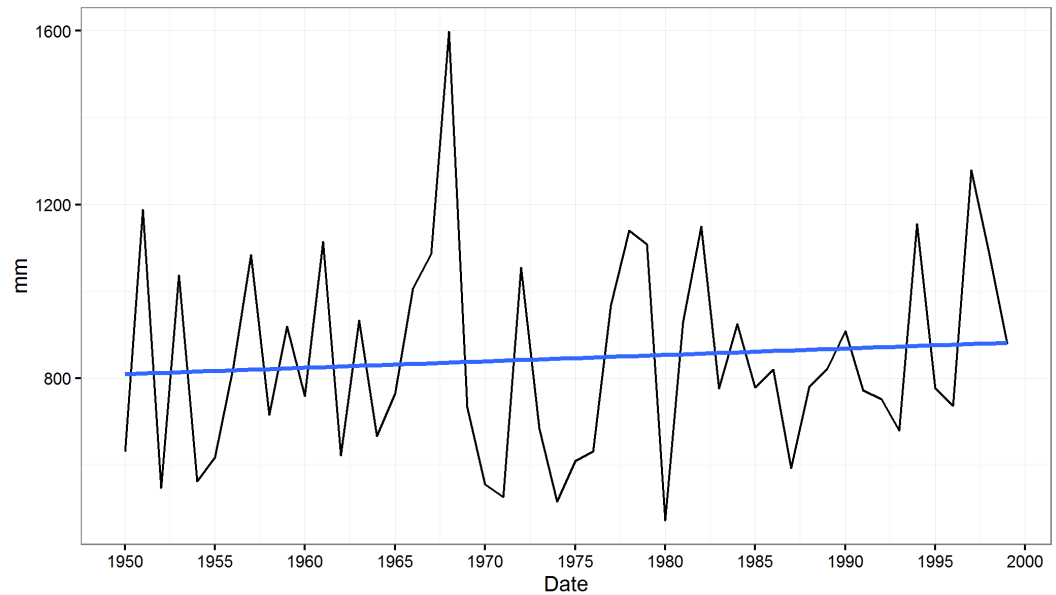
# Climate context – Historical Observations



- Inconsistent time-periods
- Missing observations

# Historical climate trends?

- year-to-year and within-year variability
- Upwards trend not significant



# Streamflow response

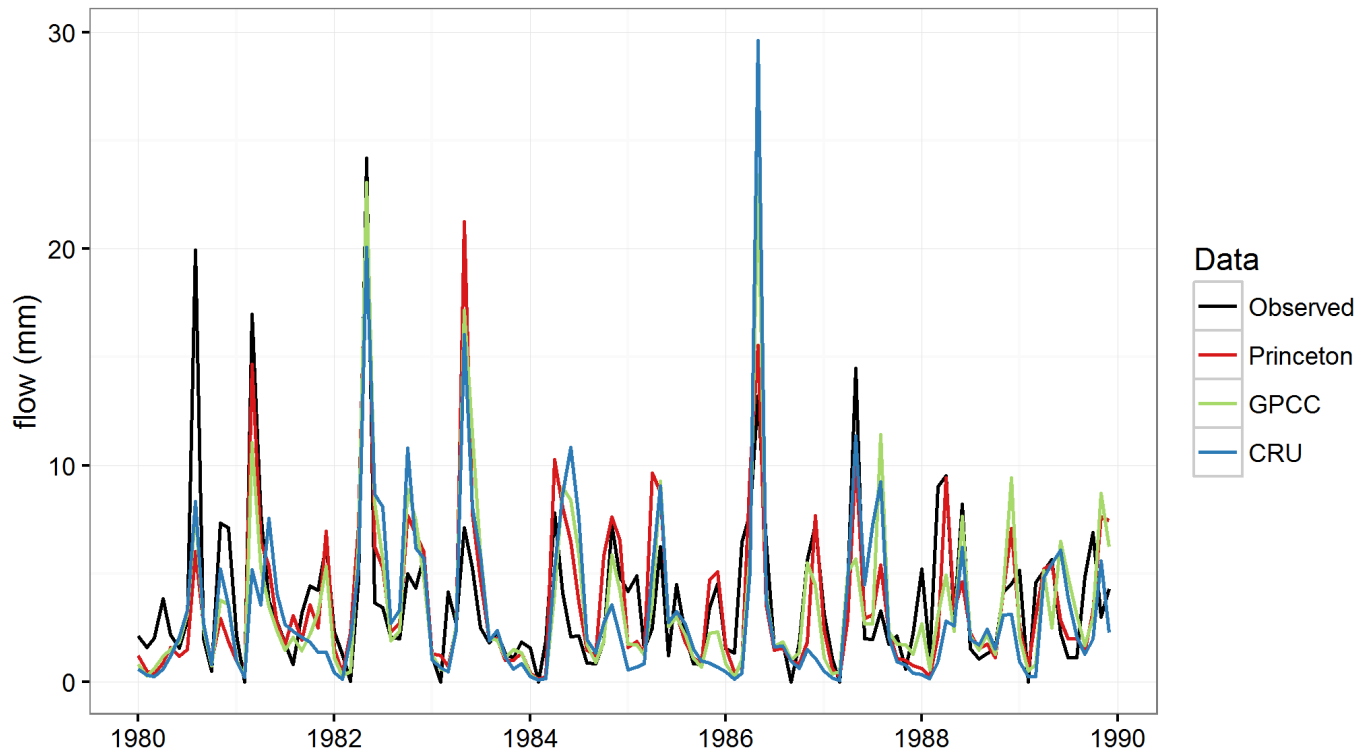
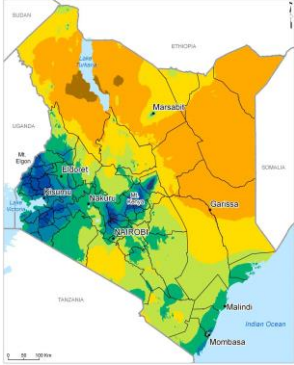


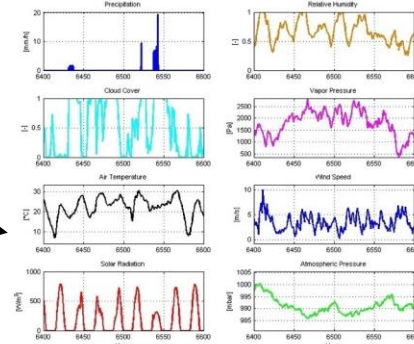
Figure 12 – Observed month flow at Gauge 3MA03 versus simulated model responses with the Princeton, GPCC, and CRU gridded datasets respectively.

# Climate Stress test of Reservoir Design

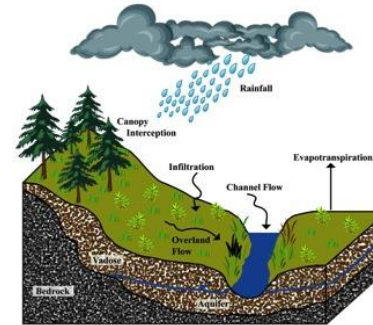
climate dataset  
(historical data)



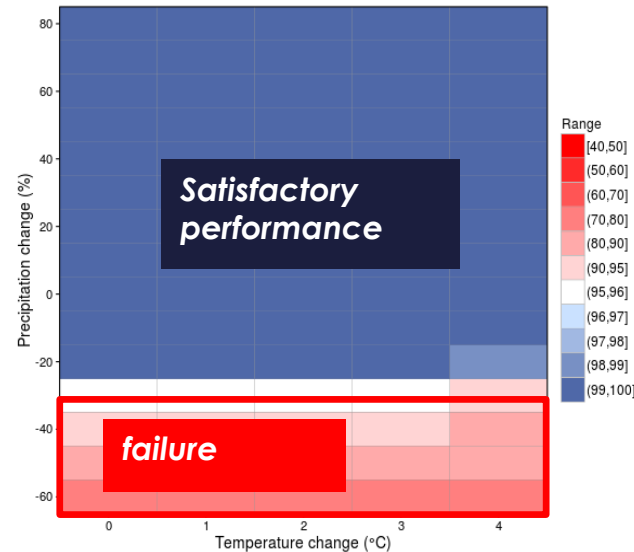
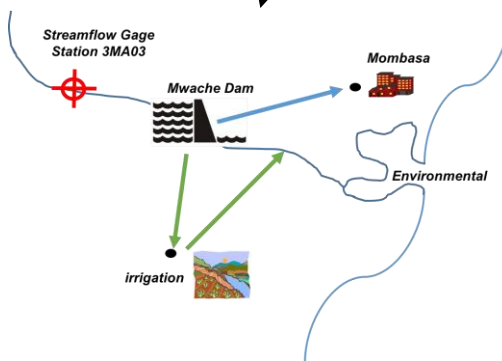
weather generator  
(wavelet or model)



hydrologic response  
(‘abcd’ model)



system response  
(in R)

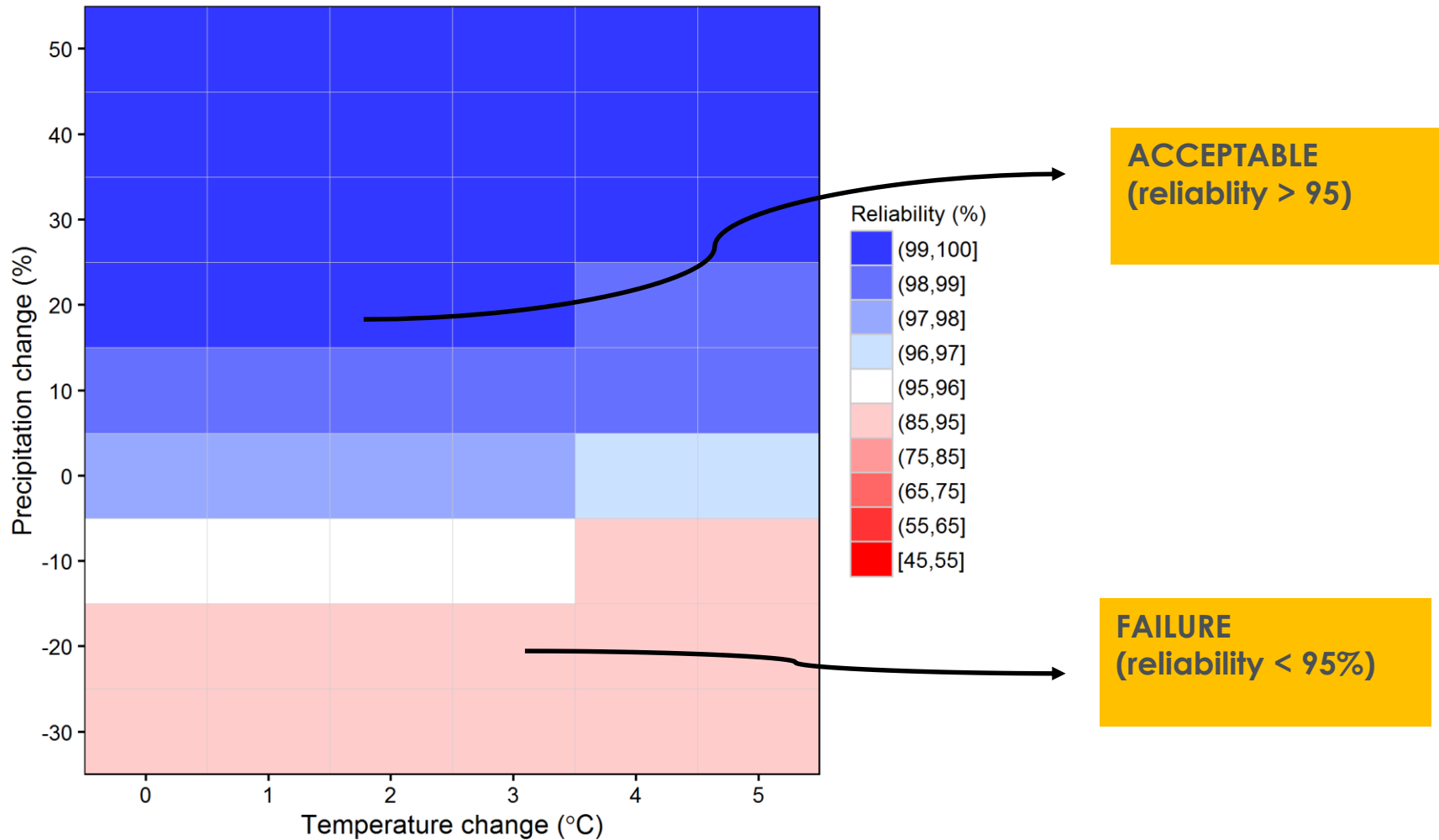


Evaluate  
robustness  
across  
6500 runs

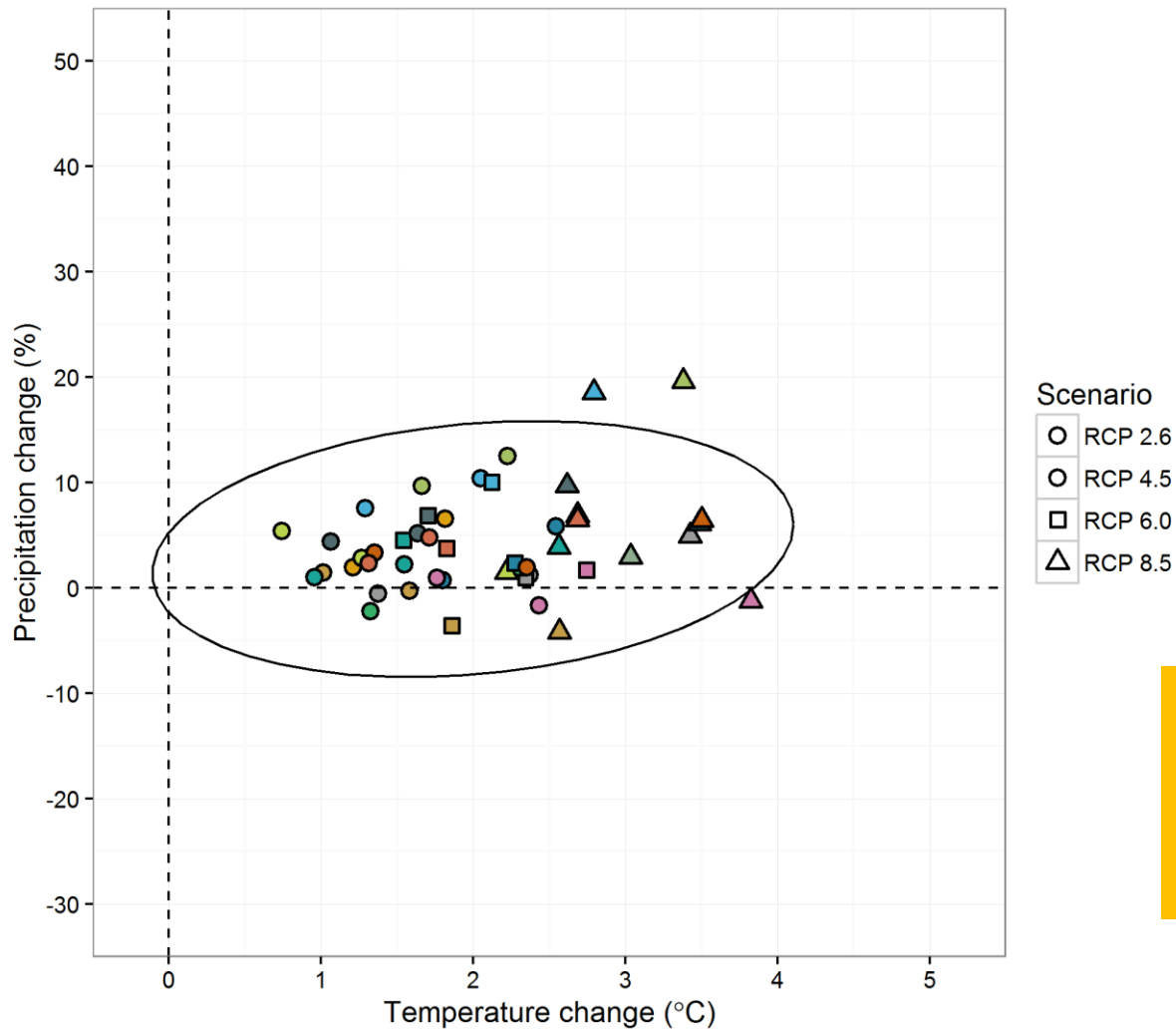


# Water Supply Reliability

- Demand = 68 MCM



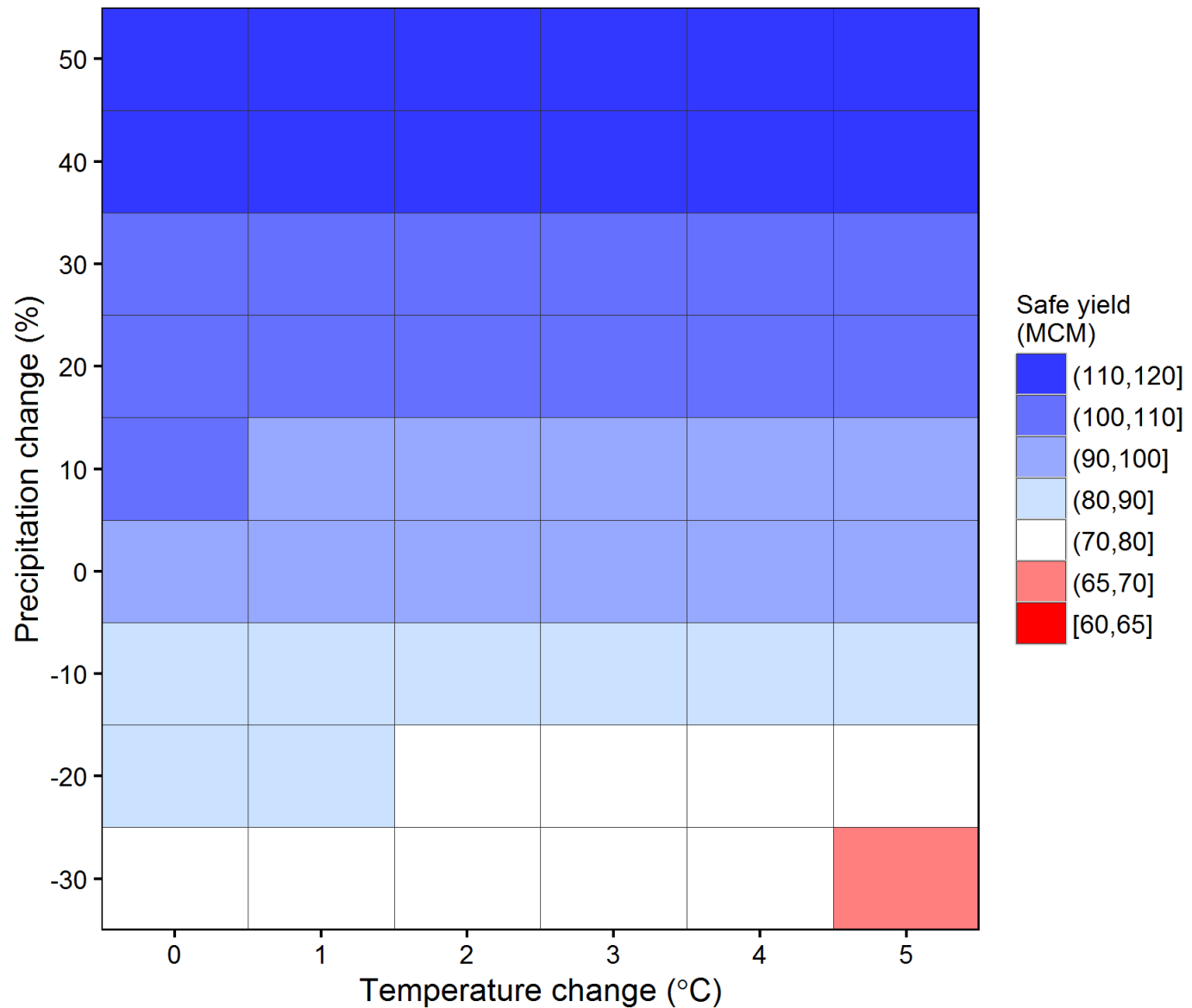
# Climate Change Projections



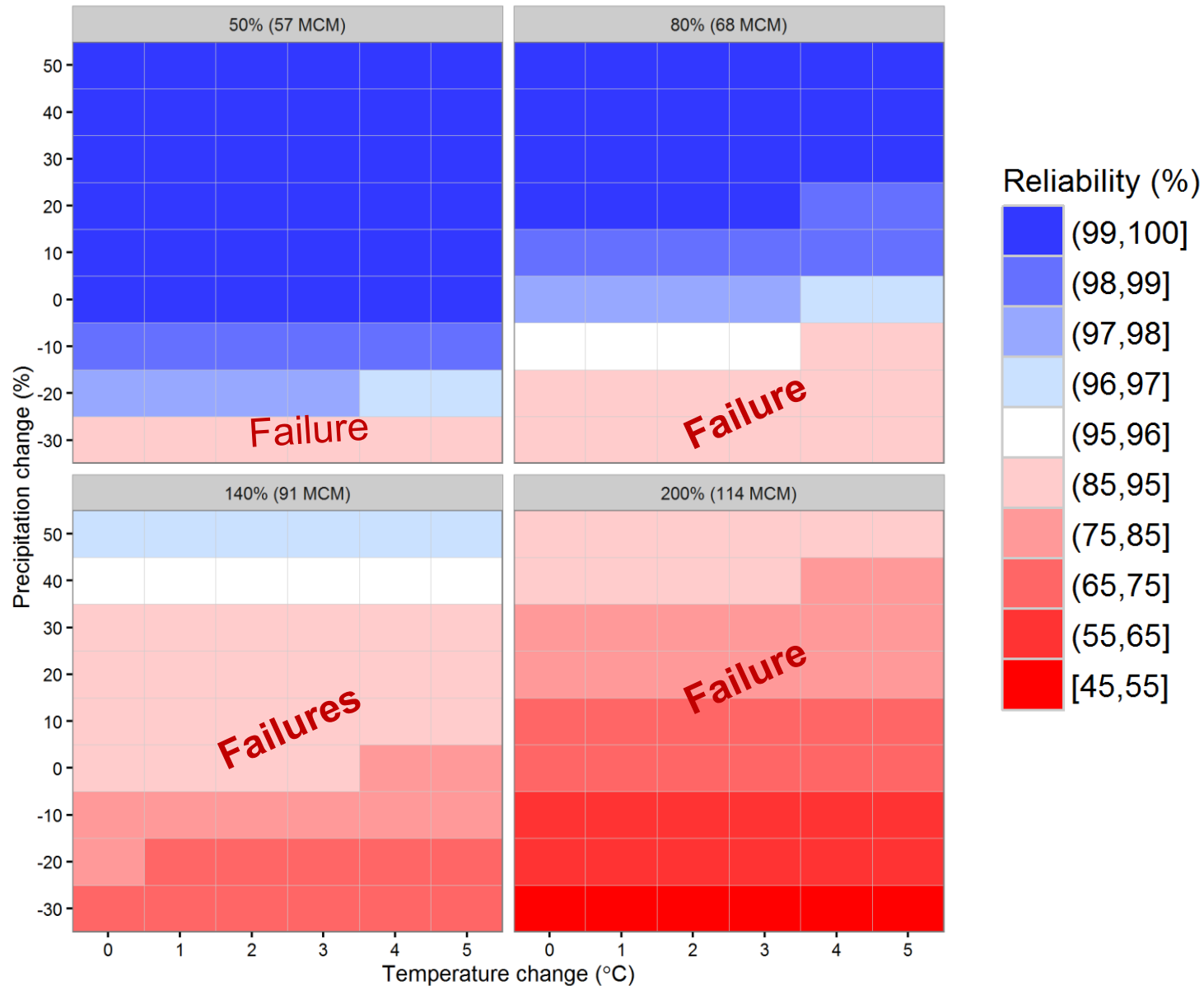
99% confidence level:

- $\Delta T$ : 0 to 4°C
- $\Delta P$ : -5% to +20%

# Safe Yield - MCM



# Water Supply Reliability as demand increases



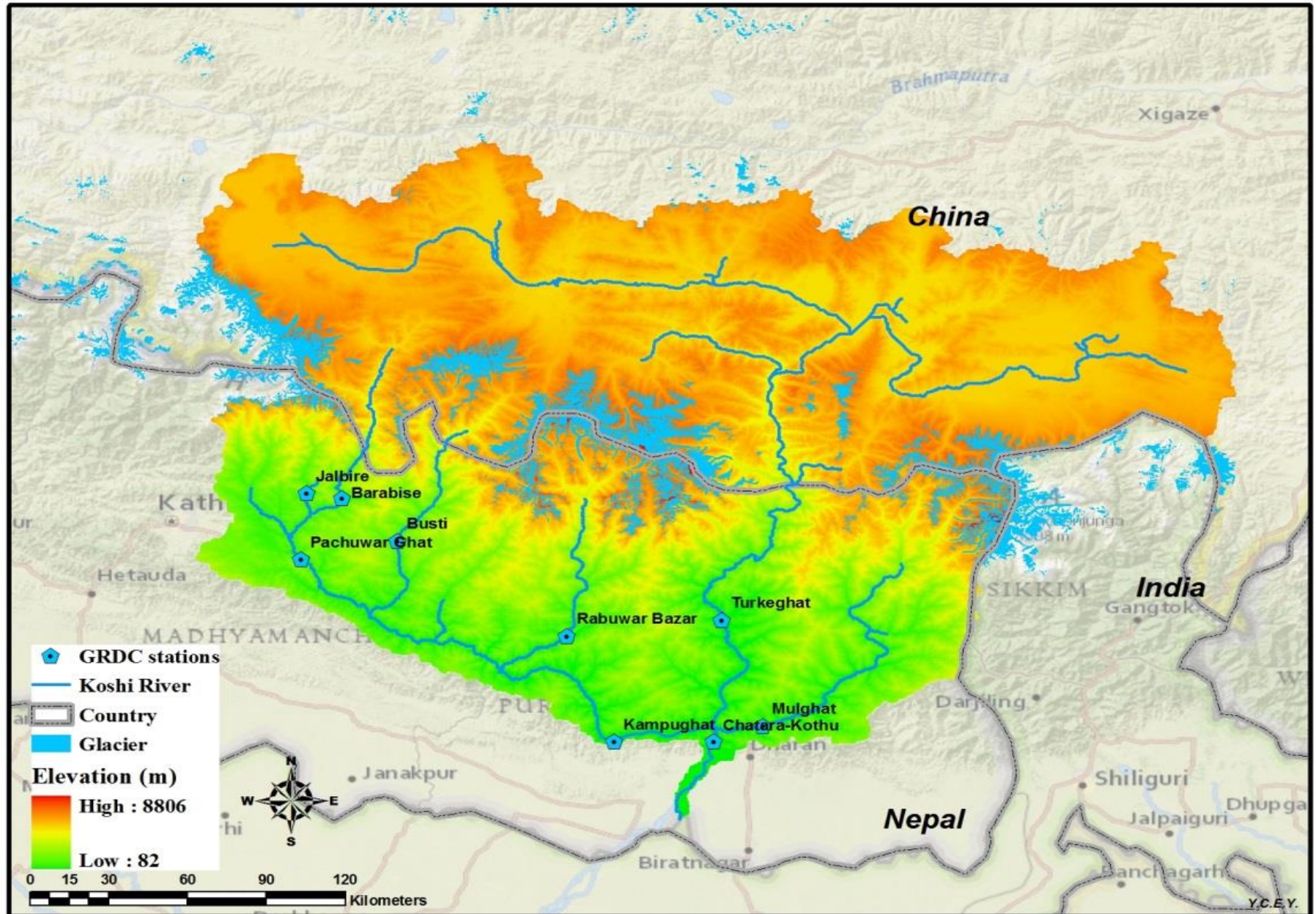


# Upper Arun Hydroelectric Plant

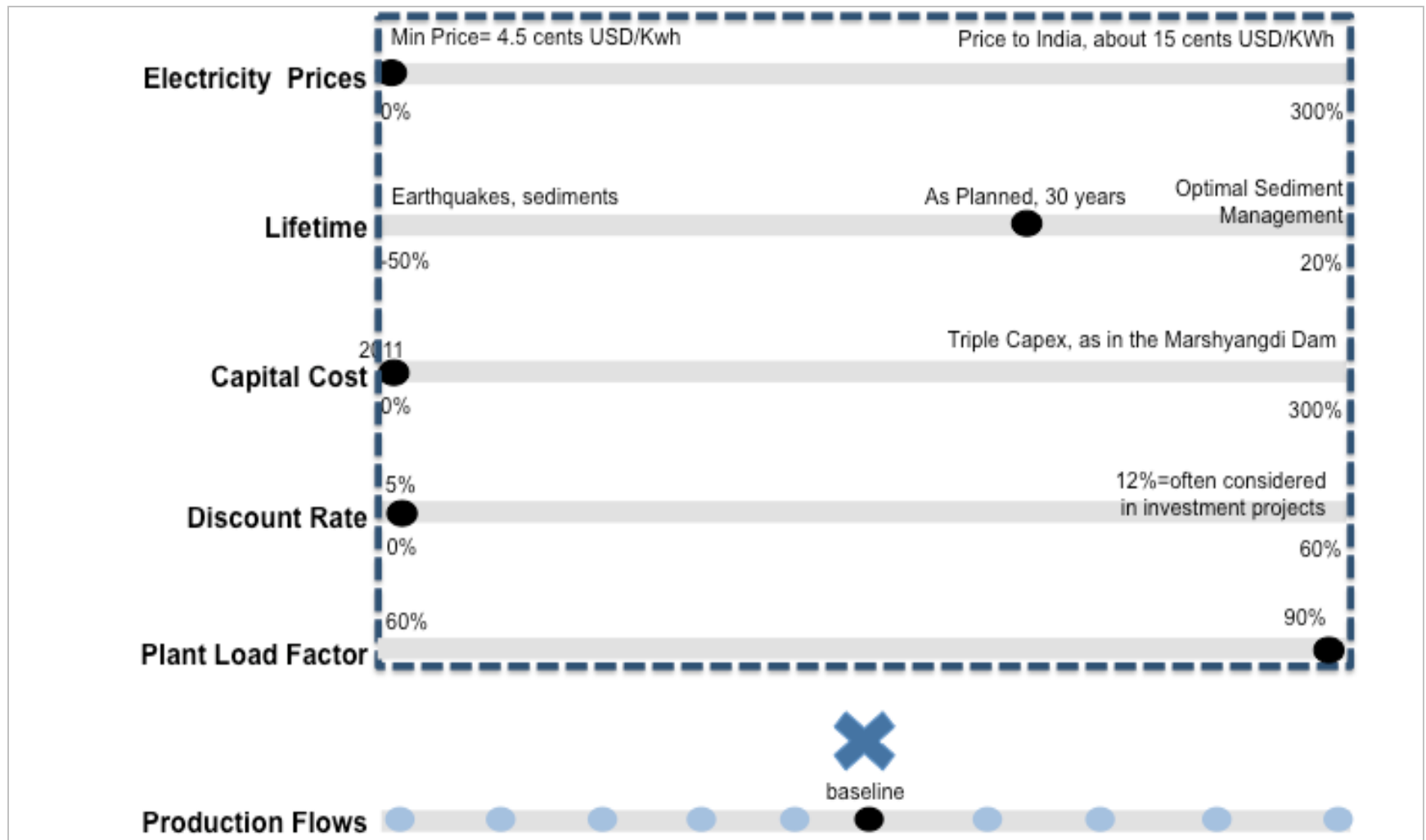




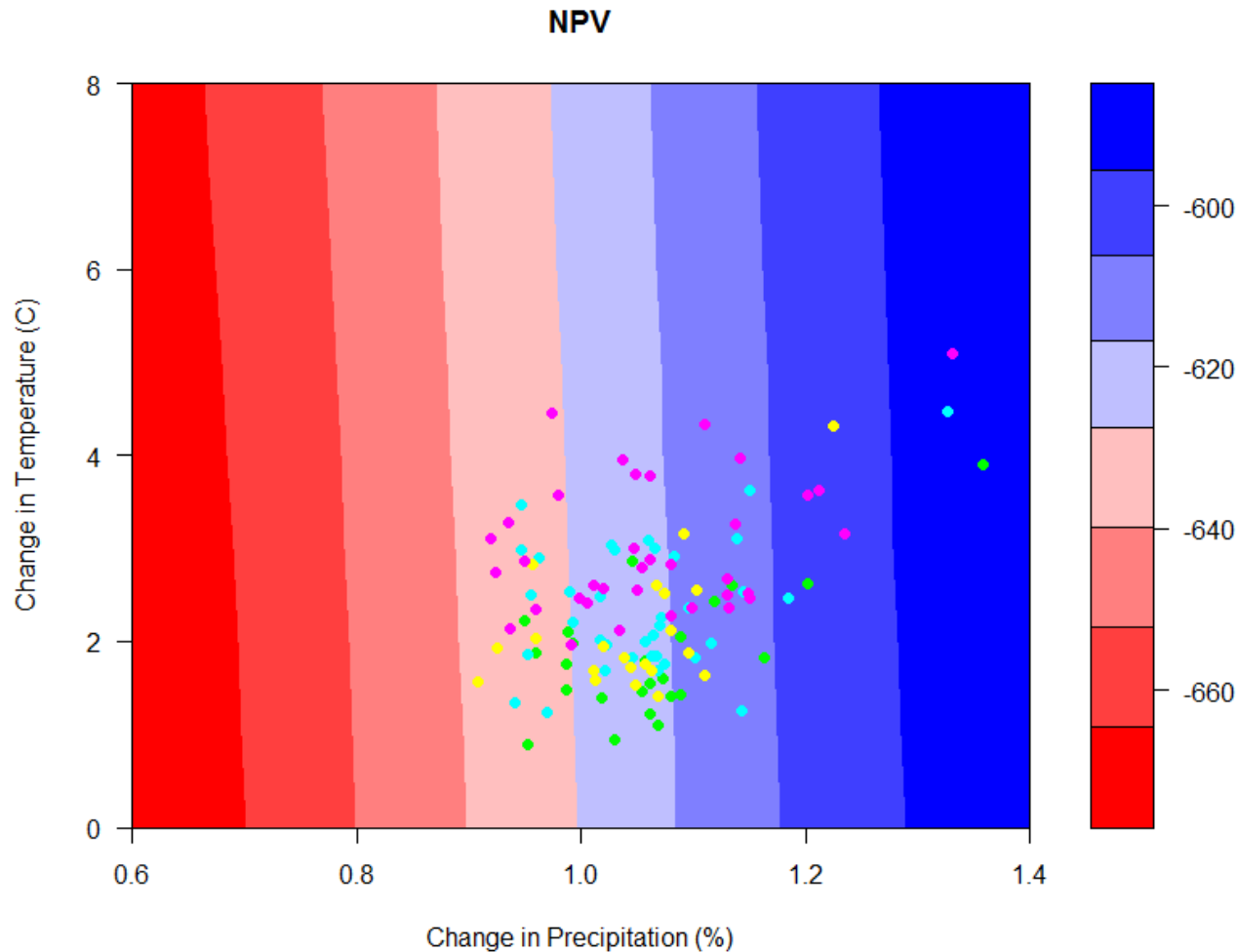
# New Hydroelectricity Investment - Koshi Basin



# Testing 6500 Plausible Futures



# Net Present Value 335 MW Design





# Investment fails if ...

**335 MW**

- **Electricity price**  
     $< 5.67 \text{ NRs}$

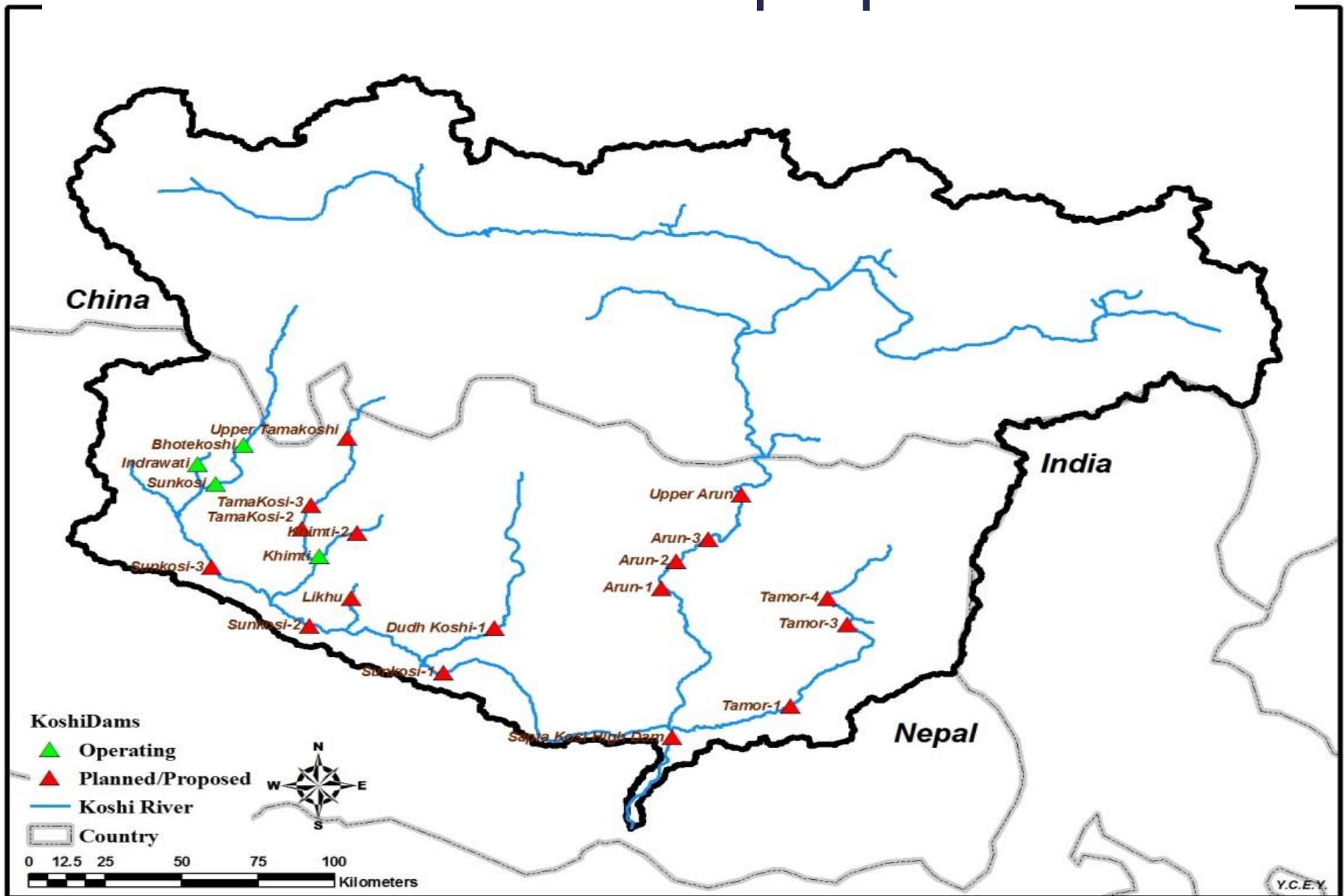
AND

- **Lifetime** of the  
    dam  $< 15 \text{ yrs}$

AND

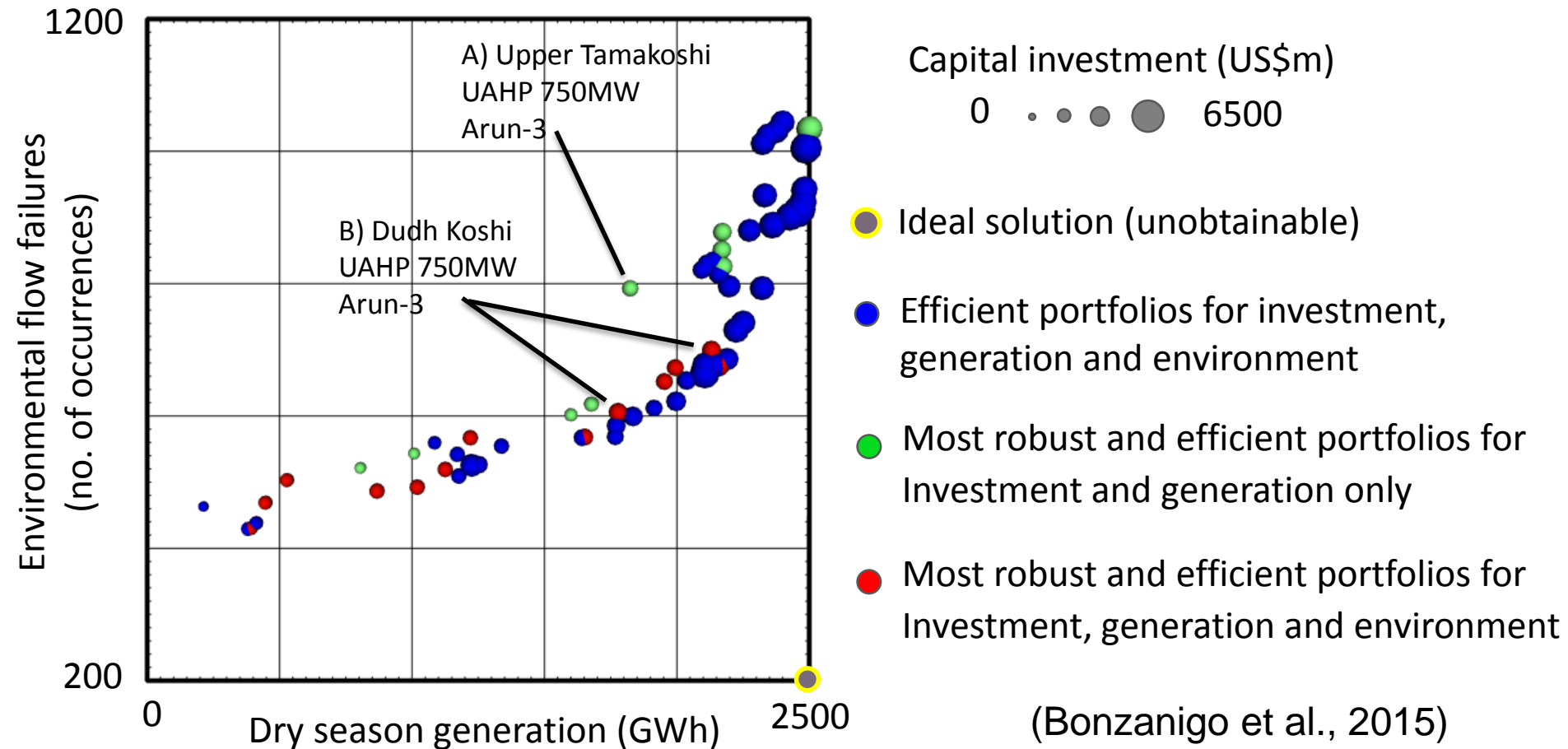
- **Discount rate**  
     $> 15.6\%$

# The Koshi Basin and proposed dams



# Identifying Optimal Investment Portfolios

Explore portfolios for best match with decision maker preferences



# Conclusions

- Current approaches to climate change impact assessment not well designed for risk assessment or aiding decisions
- Decision Making under Uncertainty methods are effective:
  - Identifying Vulnerabilities through “climate stress testing”
  - Assessing Risks
  - Planning Adaptation and identifying robust options
- Decision Tree guides manager to appropriate level of analysis to assess climate risks efficiently and effectively



# Research Needs:

1. Adaptation Options and Implementation – Margin of safety; regulatory guidelines; “safe fail”; Endogenous adaptation; etc.
2. Adaptation Planning and Time – planning occurs over time as climate evolves; value of near term climate information; reversible decisions and options based approaches; rule of thumb guidance approaches; dominance of variability in near term.
3. Probabilistic Approaches for Estimating Climate Risk – research effort needed to estimate probabilities of problematic climate change – and risk-based context is critical.

Thanks! Questions: [casey@umass.edu](mailto:casey@umass.edu)





*June 2008 Overtopping Event*

---

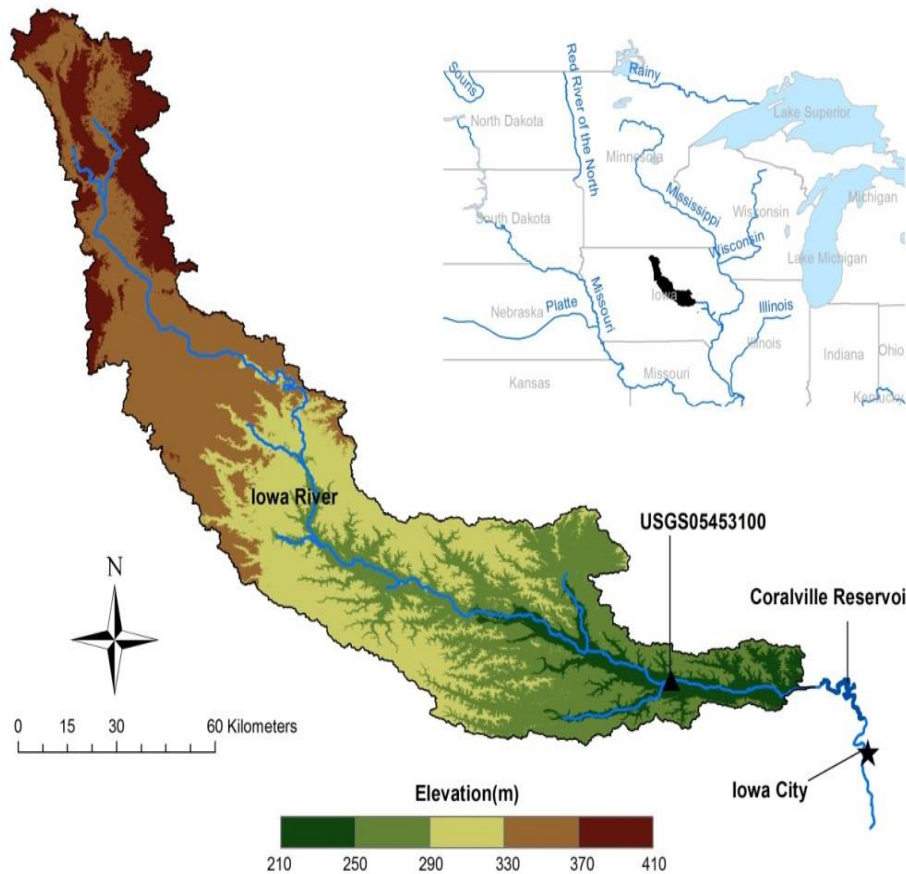
Iowa River, Iowa, USA

# CLIMATE INFORMED FLOOD RISK

SERDP Project# RC 2516 Climate-Informed Estimation of Hydrologic Extremes for Robust Adaptation to Non-Stationary Climate; NSF CAREER: Robust Management of Climate Uncertainty for Ecohydrological Sustainability



# Iowa River – Climate Change or Natural Variability?



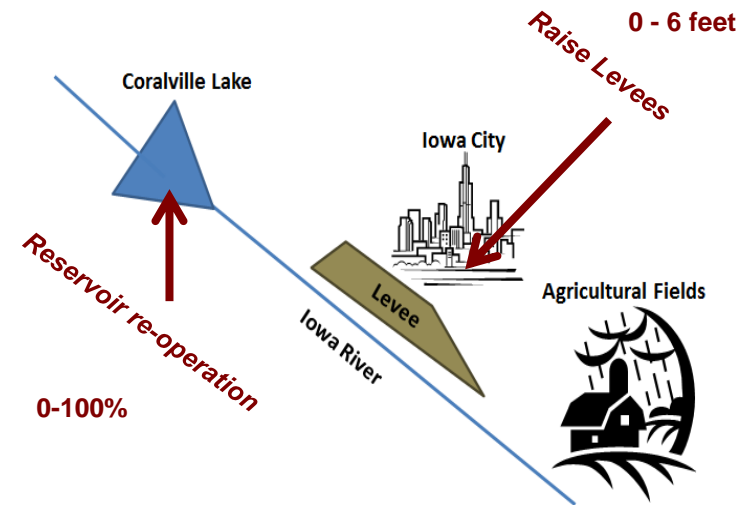
**Spillway use:**

-1993  
-2008  
-2013

*Are floods increasing?*

*June 2008 floods*

## Proposed adaptations:

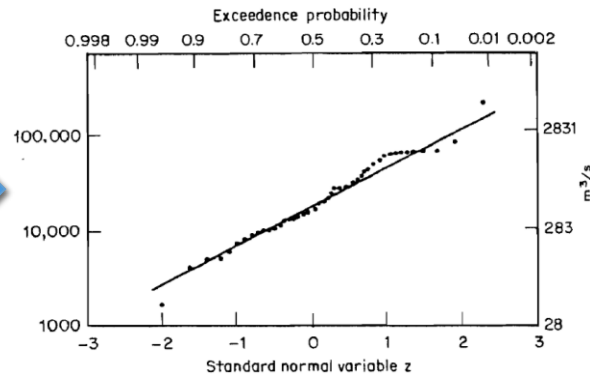
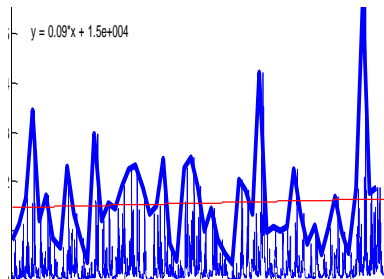


# Climate Informed Risk Estimate



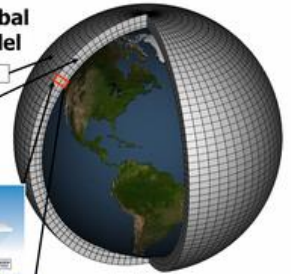
Stream gage

Historic record



Schematic for Global Atmospheric Model

Horizontal Grid (Latitude-Longitude)  
Vertical Grid (Height or Pressure)



X



Climate Informed Risk Estimate

$$LP3[\mu(X), \sigma(X), \xi(X)]$$



# Sustainable water management under future uncertainty with eco-engineering decision scaling

N. LeRoy Poff<sup>1\*</sup>, Casey M. Brown<sup>2</sup>, Theodore E. Grantham<sup>3</sup>, John H. Matthews<sup>4</sup>, Margaret A. Palmer<sup>5</sup>, Caitlin M. Spence<sup>2</sup>, Robert L. Wilby<sup>6</sup>, Marjolijn Haasnoot<sup>7,8</sup>, Guillermo F. Mendoza<sup>9</sup>, Kathleen C. Dominique<sup>10</sup> and Andres Baeza<sup>11</sup>

**Managing freshwater resources sustainably under future climatic and hydrological uncertainty poses novel challenges. Rehabilitation of ageing infrastructure and construction of new dams are widely viewed as solutions to diminish climate risk, but attaining the broad goal of freshwater sustainability will require expansion of the prevailing water resources management paradigm beyond narrow economic criteria to include socially valued ecosystem functions and services. We introduce a new decision framework, eco-engineering decision scaling (EEDS), that explicitly and quantitatively explores trade-offs in stakeholder-defined engineering and ecological performance metrics across a range of possible management actions under unknown future hydrological and climate states. We illustrate its potential application through a hypothetical case study of the Iowa River, USA. EEDS holds promise as a powerful framework for operationalizing freshwater sustainability under future hydrological uncertainty by fostering collaboration across historically conflicting perspectives of water resource engineering and river conservation ecology to design and operate water infrastructure for social and environmental benefits.**

Securing the supply and equitable allocation of fresh water to support human well-being while sustaining healthy, functioning ecosystems is one of the grand environmental challenges of the twenty-first century, particularly in light of accelerating stressors from climate change, population growth and economic development. Rehabilitation of ageing infrastructure and construction of new infrastructure are now widely viewed as engineering solutions to mitigate future climatic uncertainty in the hydrologic cycle<sup>1</sup>. Indeed, the construction of tens of thousands of dams in the twentieth century helped secure water supplies and fuel economic development in industrialized countries, and developing economies are now pursuing massive new infrastructure projects with thousands of new dams proposed for hydropower production and water supply security<sup>2</sup>.

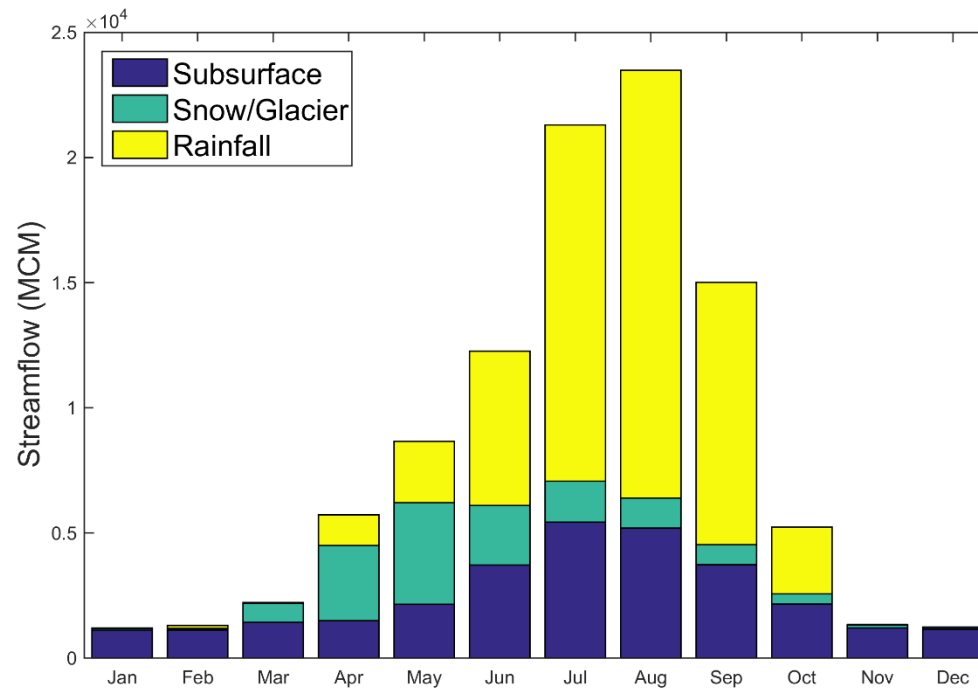
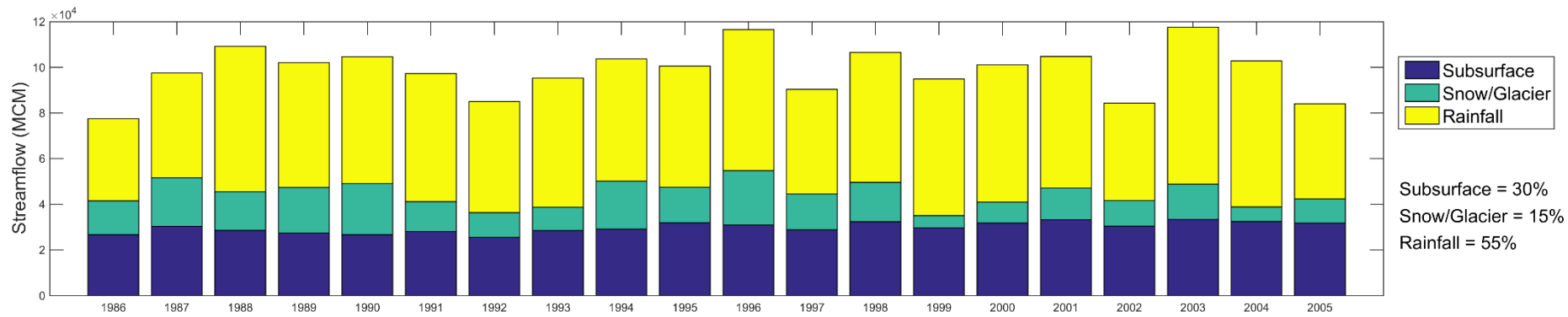
Despite the economic stimulus provided by many dams historically, the global experience with dam building warns that traditional approaches to water infrastructure development in a rapidly changing world carry severe risks of economic and environmental failure. First, large water projects are very capital-intensive and long-lived, costing billions of dollars to plan, build and maintain. Yet, they are vulnerable to biased economic analyses<sup>3</sup>, cost overruns and construction delays, and changing environmental, economic and social conditions that can diminish projected benefits<sup>4,5</sup>. Under a variable and changing climate, large water infrastructure may even risk becoming stranded assets<sup>6</sup>. Second, the principles of economic efficiency inherent in cost-benefit analysis dominate project design and performance assessment, making integration of social and environmental benefits and costs into a comprehensive economic

evaluation a significant challenge<sup>7,8</sup>. These costs can be substantial, as evidenced by human displacement<sup>5,9</sup>, local species extinctions<sup>10</sup> and the loss of ecosystem services such as floodplain fisheries and other amenities<sup>11,12</sup>.

As unanticipated economic, social and environmental costs accumulate with ageing water infrastructure, society is investing in restoration projects to partially undo longstanding environmental degradation, including modifying flow releases from dams<sup>13,14</sup> and, in some cases, dam removal<sup>15</sup>. As global-scale impairment of aquatic ecosystem function becomes increasingly documented and articulated<sup>16,17</sup>, there is urgent need for a broader conception of sustainable water resource management that formulates environmental health as a necessary ingredient for water security and the social well-being it supports<sup>18–20</sup>. Notably, new national directives are emerging to develop and manage river ecosystems in more environmentally sustainable ways that retain social benefits, including in the USA<sup>21</sup>, Europe<sup>22,23</sup> and Australia<sup>24</sup>.

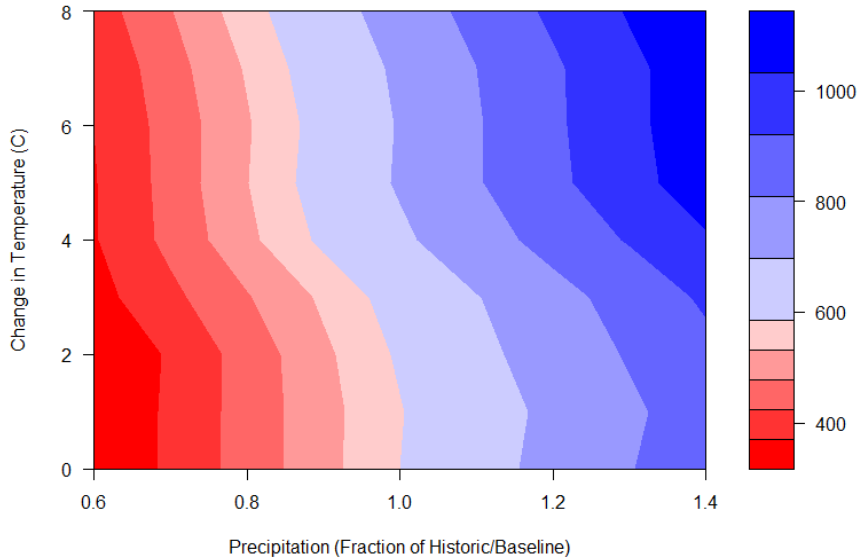
## Towards a sustainable water management paradigm

Here, we ask if a more sustainable water management philosophy can be forged to guide investment in, and design of, water infrastructure while avoiding adverse (and sometimes irreversible) social and environmental consequences. We consider 'sustainable water management systems' to be those that meet the needs of society over the lifetime of the infrastructure while also maintaining key ecological functions that support the long-term provision of ecosystem goods, services and values, including biodiversity maintenance. These systems would embrace the principle of resilience, that

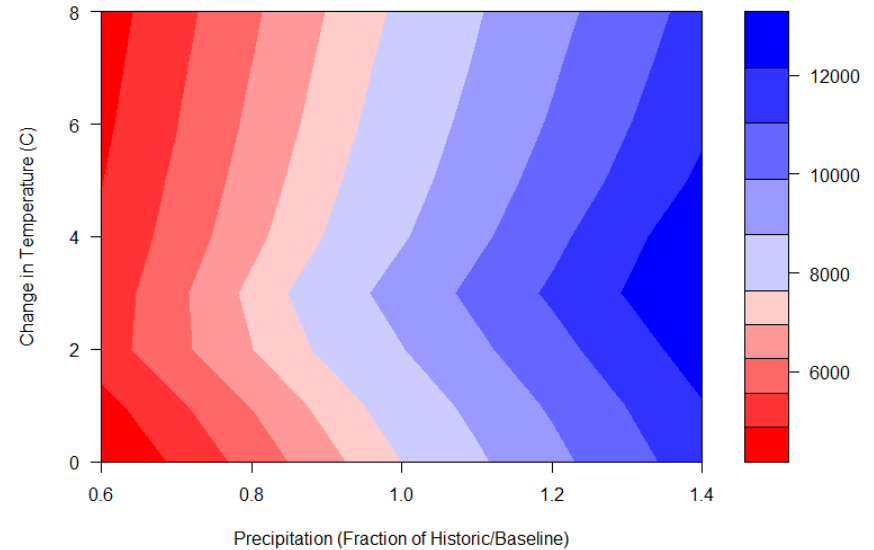


# ***Streamflows sensitivities to changes in precipitation and temperature in the Upper Arun...***

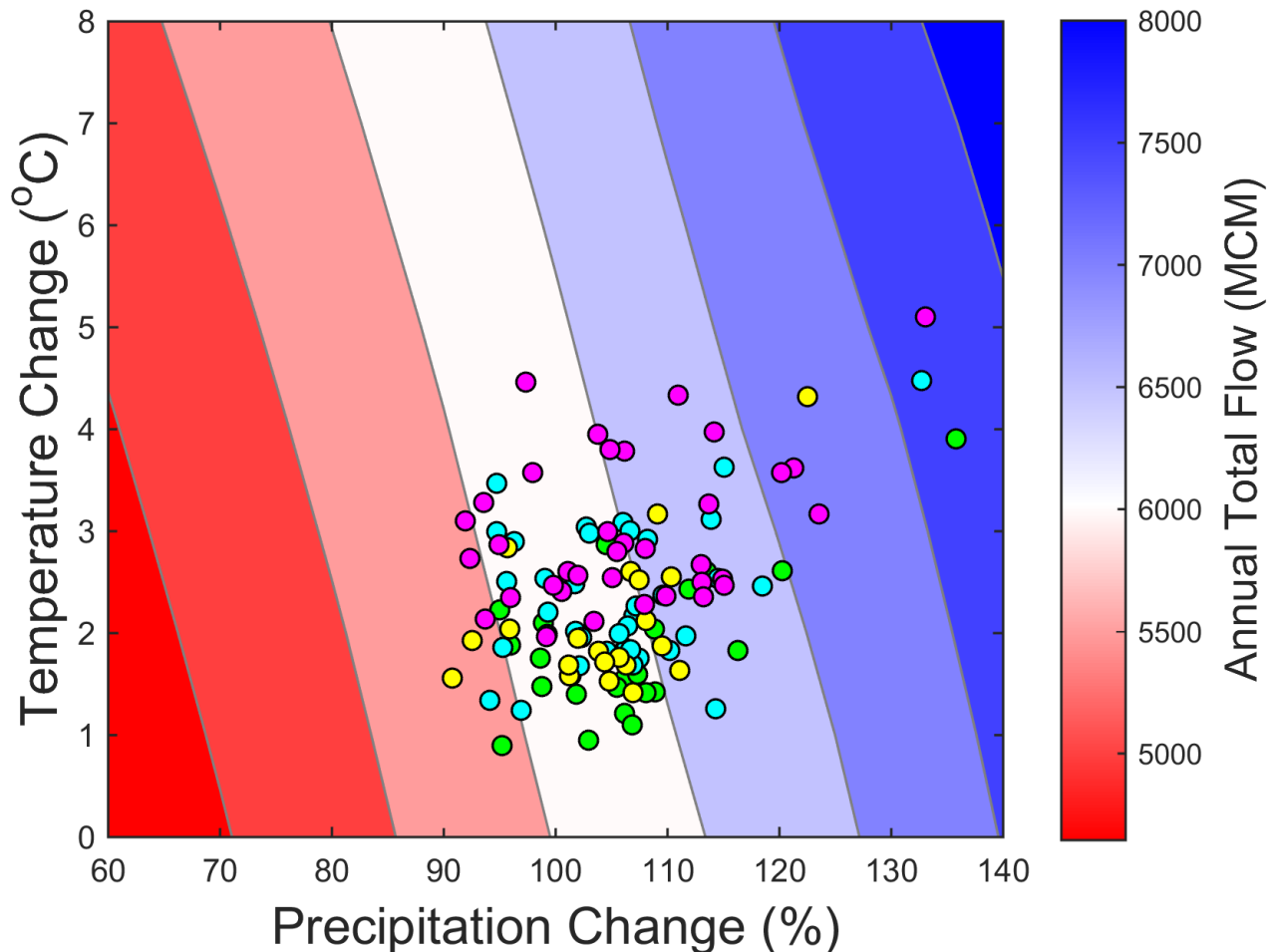
**Streamflow Response Surface, Dry Season (MCM)**



**Streamflow Response Surface, Wet Season (MCM)**



# Total Annual Flow



Green: RCP 2.6; Blue: RCP 4.5; Yellow: RCP 6.0; Purple: RCP 8.5

# Year 2050 Glacier Area

(as % Year 2014 Glacier Area)

